

How Do Retirees Value Life Annuities? Evidence from Public Employees

John Chalmers

Lundquist College of Business, University of Oregon

Jonathan Reuter

Carroll School of Management, Boston College, and the National Bureau of Economic Research

Because life annuities can increase the level and decrease the volatility of lifetime consumption, economists have long been puzzled by the low demand for life annuities. One potential rational explanation is that adverse selection drives up life annuity prices, which drives down demand. We study the choice between life annuities and lump sums made by 32,000 retiring public employees. These unique data allow us to extend the existing literature by exploiting economically significant cross-sectional and time-series variation in life annuity pricing. We find little evidence that retiree demand for life annuities rises when life annuity prices fall. We find strong evidence that demand responds to salient variation in individual characteristics, such as health, and to measures of investor sentiment, such as recent equity returns. (*JEL* H55, D14, G11, G22)

Since the publication of Yaari's (1965) seminal article, economists have argued that retirees should allocate a substantial portion of their assets to life annuities. Because life annuities continue making payments until death, they insure retirees against outliving their accumulated financial assets. In a standard life-cycle model, this insurance is quite valuable. It is puzzling, therefore, that

We thank Pierluigi Balduzzi, Daniel Bergstresser, Jeffrey Brown (AFA discussant), John Campbell, David Chapman, Daniel Cooper, Cliff Holderness, Edie Hotchkiss, Alexander Ljungqvist (editor), Alan Marcus, Robin McKnight, Bertrand Melenberg, Ali Ozdagli, Joshua Rauh, Antoinette Schoar, Phil Strahan, Peter Tufano, Eric Zitzewitz, and an anonymous referee, as well as the participants at the 2010 Netspar Pension Workshop, 2010 Boston Area Consumer Finance Working Group, and 2011 American Finance Association Meetings for helpful discussions related to this project. We thank Benjamin Goodman for providing data on how TIAA priced life annuities over our sample period, and we thank employees from the Oregon Public Employees Retirement System who provided invaluable assistance by compiling and helping us interpret their data. Because PERS was subject to major legislative changes in late 2003, our description of the system only applies to the period for which we possess data. This research was supported by a U.S. Social Security Administration grant (#10-M-98363-1-01 to the National Bureau of Economic Research (NBER) as part of the SSA Retirement Research Consortium). The findings and conclusions expressed in this article are solely those of the authors and do not represent the views of the SSA, any agency of the federal government, PERS, the State of Oregon, or the NBER. Send correspondence to Jonathan Reuter, Carroll School of Management, Boston College, 140 Commonwealth Ave., Chestnut Hill, MA 02467; telephone: 617-552-2863. E-mail: reuterj@bc.edu.

the private market for life annuities is small.¹ The traditional explanation for this inconsistency between economic models and economic behavior is that adverse selection drives up annuity prices, which drives down demand. This presupposes that retirees are rationally comparing the price of a life annuity to the expected benefit of smoother lifetime consumption.² Alternatively, as delineated in [Brown \(2009\)](#) and [Benartzi, Previtro, and Thaler \(2011\)](#), the dearth of annuitization may reflect poor financial decision-making, resulting from financial illiteracy or behavioral biases. Distinguishing between rational and behavioral explanations for “under-annuitization” is important because their welfare and policy implications are quite different.

Life-cycle models predict that demand for life annuities will be higher when the life annuity payments available to retirees are more valuable. Variation in the value of these payments can arise from differences in retiree characteristics or from differences in life annuity pricing. However, due to the lack of plausibly exogenous variation in life annuity pricing, the existing literature focuses on variation in retiree characteristics (e.g., [Brown 2001](#); [Finkelstein and Poterba 2004](#); [Bütler and Teppa 2007](#); [Previtro 2010](#); [Inkmann, Lopes, and Michaelides 2011](#)). Though informative, these articles offer an incomplete picture of retiree behavior. The fact that demand for life annuities responds to variation in retiree health, e.g., need not imply that it responds to variation in life annuity pricing, which may not be salient, even when economically significant.

To offer a fuller picture of how retirees value life annuities, we study the actual payout decisions of retirees covered by the Oregon Public Employees Retirement System (PERS).³ Our sample includes 32,060 retirements between January 1990 and June 2002. It has two notable features. First, each retiree must choose whether to receive higher life annuity payments and no lump sum payment (the “total life annuity” option) or lower life annuity payments and a lump sum payment (the “lump sum” option). The choice between additional life annuity payments and cash is analogous to the choice that retirees face in the private market. Second, our empirical setting provides us with a unique opportunity to study the impact of plausibly exogenous variation in life annuity pricing on retiree demand for life annuities.

Variation in life annuity pricing arises from the unusual way in which PERS calculates retirement benefits. Employees contribute a fixed percentage of their

¹ According to Beacon Research, life annuity sales (outside of employer-sponsored retirement plans) totaled eight billion dollars in 2010, which is small relative to the annual sales of other financial products, such as mutual funds.

² Even when [Yogo \(2009\)](#) extends existing life-cycle models to include endogenous investments in health, he finds that the expected utility gains from access to life annuities vary from 13% to 18%, with smaller gains for retirees in poorer health. Although these gains are approximately half of those estimated in [Mitchell et al. \(1999\)](#), they are economically significant.

³ PERS is the state agency that administers retirement plans for approximately 95% of the state and local public employees in Oregon. Our data exclude judges, politicians, or university employees. In 2009, PERS held nearly \$53 billion in assets, making it the twenty-first largest public or private pension fund in the United States.

salary to an account with two investment options. Under the lump sum option, retirees are offered their accumulated retirement account balance as the lump sum payment. Under the total life annuity and lump sum options, life annuity payments are calculated using as many as three formulas, and retirees are automatically offered the maximum payments for which they are eligible. For some retirees, the maximum payment is based on the retiree's years of service and salary history. For other retirees, the maximum payment is obtained when the retirement account balance is multiplied by a conversion factor, referred to as the actuarial equivalency factor, which depends only on the retiree's age. Whereas the conversion factors used in the private market offer retirees a risk-free rate of return based on the yield of the ten-year U.S. Treasury note, the conversion factors used by PERS offer retirees a risk-free rate of return of approximately 10%, regardless of current market conditions.⁴

These features cause the pricing of PERS life annuities to deviate from the pricing of life annuities in the private market in three significant ways. First, PERS life annuity payments are significantly larger than those that could be purchased with the lump sum in the private market. This reflects the fact that the yield on the ten-year Treasury note is below 10% during our entire sample period. For the median retiree, the total life annuity option has a "money's worth" of \$1.45, meaning that the incremental life annuity payments have an expected present value of \$1.45 per \$1.00 in forgone lump sum payment. By way of comparison, Mitchell et al. (1999) show that the money's worth of life annuities offered by life insurance companies is between \$0.80 and \$0.90. Second, the fact that different retirees' maximum life annuity payments are calculated using different formulas generates cross-sectional variation in the value of PERS life annuity payments. Consider a retiree whose maximum life annuity payment is based on her years of service and salary. Because she is also eligible for life annuity payments offering a 10% rate of return, the payments based on her years of service and salary history must offer an even higher rate of return. This is one example of how retiree characteristics that would not impact the level of life annuity payments in the private market can impact the level of PERS life annuity payments. Another example is that retirees who first contributed to PERS after August 1981 are eligible to have their (maximum) total life annuity payments calculated using one fewer formula than are retirees who contributed to PERS before that date. Finally, because PERS conversion factors are not adjusted to reflect market conditions, time-series variation in the risk-free rate generates time-series variation in the value of the PERS life annuities relative to those in the private market. Everything else equal, when the yield on the ten-year Treasury note is lower, the total life annuity option is more valuable.

⁴ The PERS conversion factors are used to determine the initial life annuity payment. Because they were set well before our sample period begins, when interest rates were routinely near 8%, they assume that the risk-free rate of return is 8%. Because of the cost-of-living adjustment, payments then increase by 2% per year.

If retirees understand that PERS life annuities are better than actuarially fair, we should observe lower demand for lump sum payments in our setting than in other settings. Indeed, only 15% of PERS retirees choose the lump sum option. This fraction is significantly lower than one might surmise from a reading of the literature on the under-annuitization puzzle. Given that there is no default payout option and Oregon public employees are eligible to receive life annuity payments from Social Security, the high demand for life annuities is all the more striking.⁵ An interpretation of our finding is that the average retiree recognizes that PERS life annuities are a “good deal.” However, this begs the question of whether retirees respond to variation in the generosity of the life annuities available from PERS.

The fraction of retirees choosing the lump sum option ranges from 6.9% in 1992 to 21.7% in 2000. To explain variation in retiree choices, we estimate both time-series regressions using the fraction of retirees choosing the lump sum option each month and logit regressions using individuals’ choices. The logit regressions allow us to exploit the cross-sectional and time-series variation in the value of life annuity payments described above. They also allow us to control for differences in retiree characteristics, which we conjecture are the most salient source of variation. For example, not only should a life annuity be less valuable to a (single) retiree in poor health, but also the impact of poor health on the value of the life annuity should be easily understood. Indeed, we find strong evidence that retirees understand how differences in health, risk aversion, and the level of already-annuitized income impact the value of the incremental life annuity income. These findings are consistent with the predictions of life-cycle models and with [Brown \(2001\)](#), [Finkelstein and Poterba \(2004\)](#), and [Inkmann, Lopes, and Michaelides \(2011\)](#).

In contrast, when we focus on plausibly exogenous variation in life annuity pricing, our findings are difficult to reconcile with the predictions of life-cycle models. Although we observe significant cross-sectional variation in the value of life annuity payments due to the use of multiple benefit formulas, the evidence that retirees respond to this variation is weak. This suggests that cross-sectional variation in annuity pricing is not salient. And, although demand for the lump sum option should decrease when the gap between the life annuity payments available from PERS and insurance companies like TIAA increases, we find no evidence that it does. In fact, we find some evidence that demand for the lump sum is higher when interest rates are lower. One explanation for this puzzling relation is that retirees are confused about the role that interest rates play in life annuity valuation, which is consistent with the evidence in, e.g., [Campbell \(2006\)](#) and [Lusardi and Mitchell \(2007\)](#), who find that financial illiteracy leads to financial mistakes.

⁵ Because [Madrian and Shea \(2001\)](#) show that default options can have a dramatic impact on financial choices, it is fortuitous that PERS retirees are not assigned to either payout option by default. Retirees must actively choose. We should only observe a retiree choosing the total life annuity option when the value she attaches to the incremental life annuity payments exceeds the value she attaches to the lump sum payment.

An alternative explanation is that falling interest rates are correlated with declining economic conditions, which increase the relative value of the lump sum payment. Similarly, because our sample period includes the NASDAQ bubble, changes in interest rates may be correlated with changes in investor sentiment. To limit the impact of omitted-variables bias, we control for the return on the S&P 500 index over the prior twelve months, the inflation-adjusted level of the NASDAQ index, and the level of the CBOE Volatility Index (VIX). Doing so reduces the size of the puzzling relation between demand for lump sums and the level of interest rates. However, it also reveals that the one-time, irreversible choice between incremental life annuity payments and the lump sum is influenced by contemporaneous measures of investor sentiment. Specifically, we find robust evidence that demand for the lump sum option is higher when equity market returns are higher, even after controlling for returns posted to retirees' PERS retirement accounts. Although we do not observe if retirees invest the lump sum payment in risky assets, this finding is consistent with retirees using the lump sum to chase past returns.⁶

The extent to which demand for incremental life annuities should respond to measures of investor sentiment, like the level of the NASDAQ index, is an open question. However, because the life annuities available from PERS offer a risk-free rate of return of at least 10%, there is a significant opportunity cost associated with choosing the lump sum option. To put this opportunity cost in perspective, consider the 453 retirees who chose the lump sum option in 2000. The average retiree traded life annuity payments with an expected present value of \$225,421 for an immediate lump sum of \$151,367.⁷

In Section 1, we discuss the existing empirical literature. In Section 2, we motivate our empirical predictions and discuss identification. In Section 3, we describe our data. In Section 4, we study how demand for lump sum payments varies with retiree characteristics, the relative value of the incremental life annuity payments, and recent equity market returns. In Section 5, we conclude. The Appendix provides a detailed description of the PERS benefit calculations.

1. Related Empirical Literature

Our findings complement existing studies of the choice between incremental life annuities and lump sums. [Finkelstein and Poterba \(2004\)](#) find evidence of adverse selection using data on life annuities purchased from a large U.K. annuity company. Similarly, we find that ex post mortality is associated with

⁶ [Benartzi \(2001\)](#) provides evidence that employees allocate more of their 401(k) contributions to company stock when the company's stock return over the prior decade is higher. Similarly, [Chevalier and Ellison \(1997\)](#) and [Sirri and Tufano \(1998\)](#) provide evidence of return chasing behavior by mutual fund investors. However, [Berk and Green \(2004\)](#) argue that return chasing is not necessarily irrational when choosing mutual funds.

⁷ This calculation ignores the fact that retirees with shorter-than-average life expectancy are more likely to choose the lump sum option, but it also ignores the insurance value that risk-averse retirees derive from life annuities.

lower demand for incremental life annuities, especially among retirees who are more likely to be single. [Inkmann, Lopes, and Michaelides \(2011\)](#) use cross-sectional data from the 2002–2003 English Longitudinal Study of Ageing to study household demand for voluntary life annuities. They find that demand responds to differences in life expectancy, the level of already-annuitized income, and other household characteristics. Then, they argue that a life-cycle model that incorporates demand for life annuities, life insurance, savings, and portfolio choice can rationalize the fact that only 5.9% of the households in their sample purchase incremental life annuities. Interestingly, although PERS retirees' characteristics have a qualitatively similar impact on the demand for incremental life annuities, we find that 85% of the retirees in our sample choose incremental life annuities.

[Bütler and Teppa \(2007\)](#) study payout choices for ten Swiss pension funds. Consistent with our findings, they find that the majority of retirees choose life annuities over lump sums. Therefore, the low demand for life annuities in the private market may reflect the fact that retirees have access to sufficient life annuity income through their pensions, or it may signal that the search costs associated with shopping for a life annuity are high. [Previtero \(2010\)](#) studies the choice between life annuity and lump sum payments by private employees using data from defined benefit plans. Consistent with our findings, he finds that the demand for life annuities is negatively correlated with recent stock market returns. However, because the money's worth of the life annuities that Previtero studies match those available in the private market, the welfare cost of any return chasing behavior is lower in his setting than in our setting, where life annuities are better than actuarially fair.

2. Empirical Predictions

In a standard life-cycle model, life annuities increase expected utility by making the individual's consumption between retirement and death both higher and less uncertain.⁸ In our setting, incremental life annuity payments increase expected utility by increasing the level of risk-free income, and therefore potential consumption, during retirement. The lump sum option, on the other hand, trades incremental life annuity payments for a cash payment, which can be invested in risky liquid assets, invested in safe liquid assets, or used to purchase goods and services.⁹ Therefore, the choice between the total life annuity and lump sum options should depend on the expected present value

⁸ [Yaari \(1965\)](#) derives conditions under which a retiree with an unknown date of death should convert all of her liquid retirement assets into life annuities. [Davidoff, Brown, and Diamond \(2005\)](#) extend this analysis by showing that retirees would benefit from converting a significant fraction of their assets into life annuities under much less restrictive conditions. Life annuities in the private market are able to offer higher rates of return than are other risk-free investments, because they transfer assets from those who die to those who survive.

⁹ Bequest motives typically reduce demand for life annuities. However, because the incremental life annuities that we study are better than actuarially fair, PERS retirees with bequest motives should choose the total life annuity option and use the monthly payments to purchase life insurance.

of incremental life annuity payments relative to the level of the lump sum payment, plus any option value associated with holding liquid assets. We use this trade-off to motivate our empirical predictions.

Note that because the vast majority of PERS incremental life annuities are better than actuarially fair, an implicit assumption throughout our article is that market frictions limit the ability of retirees to convert life annuities into lump sums in the private market. A natural and likely source of friction is asymmetric information about retiree life expectancy. In the absence of these frictions, all retirees with a normal life expectancy should choose the total life annuity option, and those who prefer a lump sum should convert some portion of their life annuity payments into a (larger) lump sum.

2.1 Variation in retiree characteristics

Our first set of predictions is based on the fact that differences in retiree characteristics can generate cross-sectional differences in the expected utility associated with life annuity payments. Because [Brown \(2001\)](#), [Finkelstein and Poterba \(2004\)](#), [Bütler and Teppa \(2007\)](#), and [Inkmann, Lopes, and Michaelides \(2011\)](#) find support for related predictions, we are primarily interested in exploring whether PERS retirees behave like the retirees studied in other settings.

We consider seven retiree characteristics. First, because PERS does not adjust life annuity payments for differences in retiree health, we predict that the lump sum option will be more valuable to single retirees in poor health, who should expect to receive fewer payments. Second, because PERS does not adjust life annuity payments for the different life expectancies of males and females, we predict that the lump sum option will be more valuable to single male retirees, who should expect to receive fewer payments than single female retirees. Third, like other forms of insurance, life annuities should be less valuable to a retiree who is less risk averse. We predict that a retiree who allocates more of her retirement account allocations to the riskier of the two investment options will be more likely to choose the lump sum option. Fourth, to the extent that police and fire officers' greater tolerance for occupational risk translates into greater tolerance for financial risk, police and fire officers will be more likely to choose the lump sum option. Fifth, because the marginal value of insurance declines with the level of insurance, the value that a retiree attaches to the incremental life annuity should fall with the level of already-annuitized income. We predict that demand for the lump sum option will rise with the level of the life annuity payments under the lump sum option. Sixth, we predict that a retiree who is more reliant on PERS retirement benefits because she spent a larger fraction of her career working for PERS employers is less likely to choose the lump sum option. Seventh, to the extent that financial literacy is positively correlated with income ([Campbell 2006](#)), we predict that a retiree with a higher preretirement salary will be less likely to choose the lump sum payment over a better-than-actuarially-fair life annuity.

Note that because all retirees receive some life annuity payments, retirees must also choose between single life annuities, which stop making payments when the retiree dies, and joint life annuities, which stop making payments only after the retiree and their beneficiary have died. Because joint life annuities are more likely to be chosen by married retirees, who must also consider the financial needs of their spouses, we expect the characteristics of retirees choosing joint life annuities to explain less variation in demand for lump sums (which is found by [Brown 2001](#)). Finally, [Brown and Poterba \(2000\)](#) argue that access to joint life annuities should make married retirees less likely to fully annuitize their retirement assets than might single retirees. The complication with testing this prediction in our setting is that, although we lack the data needed to systematically compare the money's worth of single and joint life annuities, calculations based on the actual payout options of a married retiree suggest that joint life annuities are significantly more generous than are single life annuities.

2.2 Cross-sectional variation in life annuity pricing

Our second set of predictions focuses on plausibly exogenous cross-sectional variation in life annuity pricing arising from how PERS calculates retirement benefits. To understand how we exploit this variation, it is necessary to provide additional details on how retirement benefits are determined under the total life annuity and lump sum options. PERS employees contribute 6% of their salary to a defined contribution-style retirement account with two investment options. They have the option to invest 25%, 50%, or 75% of their contribution to the riskier "variable" account; the remainder is invested in the safer "regular" account. The contributions and returns posted to these two accounts determine the accumulated account balance at retirement, which is the size of the lump sum payment under the lump sum option.

The level of the life annuity payment under the total life annuity option is automatically calculated as the maximum of three possible benefit formulas. *DC* is a traditional defined contribution retirement benefit that depends on the actuarial equivalency factor that PERS uses to annuitize the retirement account balance. *DB* is a traditional defined benefit retirement benefit that depends on years of service, salary history, whether the retiree is a police or fire officer, and an adjustment for early retirement. *DCDB* is a hybrid benefit that equals half of *DC* plus slightly more than half of *DB* and which is only available to employees who first contributed to PERS in or before August 1981.¹⁰ The level of the life annuity payments under the lump sum option is automatically calculated as the maximum of two benefits: half of the total life annuity payment under *DC* or slightly more than half of the total life annuity payment under *DB*. Eligibility

¹⁰ PERS refers to the *DC*, *DB*, and *DCDB* options as "Money Match," "Full Formula," and "Formula plus Annuity." We state the various total life annuity and partial life annuity formulas in the Appendix.

for *DCDB* only impacts the level of the life annuity payments under the total life annuity option.

When comparing the total life annuity option to the lump sum option, life-cycle models predict that retirees will compare the expected present value of the incremental life annuity payments under the total life annuity option to the lump sum payment they must forgo. Dividing the incremental life annuity payment by the lump sum payment yields an annuity price that is analogous to the actuarial equivalency factor quoted in the private market. The fact that PERS uses multiple formulas to calculate life annuity payments under the total life annuity and lump sum options generates cross-sectional variation in this annuity price. Depending on the combination of formulas used to calculate the maximum life annuity payments, the dollar value of the incremental life annuity payments can range from 32.5% to 50% of the total life annuity payment. If this variation in annuity pricing is salient to retirees, we predict that demand for the lump sum option will be lower when the relative value of the incremental life annuity payments is higher.

Because the total life annuity payments of retirees who first contributed into PERS after August 1981 are calculated using two formulas instead of three, there are circumstances under which these retirees are eligible for smaller incremental life annuity payments than retirees who first contributed into PERS in or before August 1981 (holding retiree characteristics and the retirement account balance constant). If this particular source of cross-sectional variation is salient, we predict that it will increase demand for the lump sum option.

Though variation due to the choice of retirement benefit formulas would normally raise concerns about strategic behavior, PERS retirees automatically receive the maximum life annuity payments for which they are eligible. Retirees can expect to increase their future retirement benefits by working another year, or by allocating a larger fraction of their retirement contributions to the risky investment, but they have no influence over which formulas PERS uses to calculate their life annuity payments under the total life annuity and lump sum options; hence, retirees have no influence over the level of the incremental life annuity payments.

2.3 Time-series variation in life annuity pricing

The final prediction concerns variation in PERS life annuity pricing due to time-series variation in the risk-free rate. In the market for private life annuities, insurance companies use the prevailing risk-free rate to set the actuarial equivalency factor, which determines the level of life annuity payment per dollar invested. When interest rates fall, the actuarial equivalency factors available from TIAA and other insurance companies fall. In contrast, the actuarial equivalency factors that PERS uses in its retirement benefit calculations rarely change. Because of this inertia, when the risk-free rate falls, life annuity payments available from PERS become relatively more generous

than the life annuity payments available from TIAA. To be clear, lower interest rates do not change the dollar value of the PERS incremental life annuity payments. Instead, they increase the cost of buying the same incremental life annuity payments in the private market. Or, put differently, they increase the gap between the rate of return that retirees can earn on their retirement account balance by choosing the total life annuity option and the risk-free rate of return available in the market. For this reason, we predict that demand for the lump sum option will be lower when interest rates are lower.

There are several caveats. The prediction that lower interest rates make life annuities more valuable is unique to our setting. Milevsky and Young (2002) argue that retirees in the private market should delay annuitization when interest rates are low, rather than lock in permanently low life annuity payments.¹¹ The facts that PERS life annuity payments become relatively more valuable when the risk-free rate falls, and that they are only available at the time of retirement, imply that PERS retirees are unlikely to benefit from delaying annuitization.

More importantly, our prediction holds the value of the lump sum payment constant. To identify retirees' choices as mistakes, we must rule out the possibility that lower interest rates rationally increase demand for risky liquid assets, safe liquid assets, or consumption. Although we are limited by the fact that we do not observe whether the lump sum is invested or consumed, we are able to explicitly test two alternatives. The first is that lower interest rates increase the value of already-annuitized income and that the resulting income effect increases demand for the lump sum option. The second is that lower interest rates proxy for greater economic uncertainty, which increases the value of the lump sum option by even more than it increases the value of the incremental life annuity payments. To control for variation in economic uncertainty, we control for the level of the CBEO Volatility Index (VIX) at the end of the month before the payout choice.¹² If larger values of VIX, which is also known as the "fear index," increase demand for liquid savings, the coefficient on the control variable will be positive.¹³

Finally, demand for the lump sum option may respond, for rational or behavioral reasons, to time-series variation in investor sentiment. If fluctuations in interest rates and investor sentiment are correlated and we do not control for fluctuations in investor sentiment, the coefficient on our measure of relative

¹¹ Also see Tergesen, Anne, and Leslie Scism, "Are Annuities Being Overhyped as a Retirement Cure-All?" *Wall Street Journal*, February 13, 2010.

¹² VIX measures the expected volatility on U.S. equity over the next thirty days. It has been shown to be negatively correlated with mutual fund flows and other measures of investor sentiment. See, e.g., Ben-Rephael, Kandel, and Wohl (2012).

¹³ On the other hand, Sundaresan (2001, p. 208) provides evidence that interest rate volatility is positively correlated with the level of interest rates. Given the 2% annual cap on cost-of-living adjustments, it seems just as likely that higher interest rate volatility could generate more demand for lump sum payments, which could be invested in assets offering even better inflationary hedges. This argument suggests that lower interest rates should decrease demand for the lump sum option.

generosity will suffer from omitted-variables bias. To distinguish the impact of interest rates from the impact of the NASDAQ bubble, which burst toward the end of our sample period, we control for the inflation-adjusted level of the NASDAQ index, which has a correlation of 0.4638 with our measure of PERS generosity. We also control for the return on the S&P 500 index over the prior twelve months. To the extent that retirees forgo better-than-actuarially-fair life annuity payments in response to recent equity market conditions, they may be making costly mistakes.

2.4 Measuring variation in life annuity pricing

As introduced earlier, the money's worth of the incremental life annuity is the expected present value of the future life annuity payments per dollar of initial outlay. The money's worth of the incremental life annuity payments available to retiree k is defined as

$$MW_{Max}^k = [A^k] \times \left[\frac{1}{P^k} \right] \times EPV_g^k, \quad (1)$$

where A^k is the initial level of the incremental life annuity payment to retiree k , P^k is the level of the forgone lump sum payment (i.e., the price of the incremental life annuity payments), and EPV_g^k denotes the expected present value of retiree k receiving \$1.00 in month 1, \$1.00 (1+ g) in month 2, etc., until death, which depends on the probability that retiree k is alive to receive each payment.¹⁴ When incremental life annuity payments are priced to be actuarially fair, money's worth equals \$1.00.

Life annuity payments are quoted in terms of actuarial equivalency factors, which state the (fixed and nominal) number of dollars paid out each month until death, per \$1,000 in initial outlay. When the maximal total life annuity and partial life annuity payments for retiree k are both calculated under *DC*, the money's worth of the incremental life annuity payments is

$$MW_{DC}^k = \left[\frac{AEF_{PERS}^k \times \text{Account Balance}}{\$1,000} \right] \times \left[\frac{1}{\text{Account Balance}} \right] \times EPV_g^k, \quad (2)$$

where AEF_{PERS} increases with retiree age to reflect declining life expectancies but does not vary with gender.¹⁵ Because PERS life annuities include a cost-of-living adjustment that is capped at 2.0% per year, and because that cap is binding throughout our sample period, we set g equal to 0.17% per month.

¹⁴ When estimating the expected present value of life annuity payments for retiree k in month t , we use the yield on ten-year Treasury notes on the last trading day of month $t - 1$, and we use the mortality tables published by the Social Security Administration for 2004. The second assumption leads us to slightly overestimate the estimated present value in 1990 relative to 2002.

¹⁵ Finkelstein, Poterba, and Rothschild (2009) study the transfer from males to females that results from not allowing actuarial equivalency factors to vary with gender. These restrictions apply to the market for pension annuities in the United Kingdom, Oregon's Public Employees Retirement System, and TIAA, among others.

To distinguish between the cross-sectional and time-series variation that we described in Section 2.2 and Section 2.3, we rewrite the money's worth of the incremental life annuity payments as the product of three terms,

$$\begin{aligned}
 MW_{Max}^k &= \left[MW_{TIAA}^k \right] \times \left[\frac{MW_{Max}^k}{MW_{DC}^k} \right] \times \left[\frac{MW_{DC}^k}{MW_{TIAA}^k} \right] \\
 &= \left[MW_{TIAA}^k \right] \times \left[\delta^k \right] \times \left[\theta^k \right].
 \end{aligned} \tag{3}$$

The first term is the money's worth of the life annuity that retiree k could purchase from TIAA with the lump sum payment—our proxy for how life annuities are priced in the private market. The second term, δ , captures cross-sectional variation arising when the maximum life annuity payments under the total life annuity and lump sum options are not both calculated using the *DC* benefit formulas. For example, δ captures cross-sectional differences in the money's worth of retirees' incremental annuity benefits based on whether they are ineligible for the *DCDB* total life annuity benefit because they first contributed to PERS after August 1981. The third term, θ , captures time-series variation in the value of PERS life annuities relative to those available from TIAA, which is driven by changes in the risk-free rate.

3. Data

Between January 1990 and June 2002, we observe the payout choices of 32,060 retirees between the ages of fifty and seventy. For each retiree, we observe whether she chooses the total life annuity option or the lump sum option. We also observe her retirement account balance, her allocation between the regular and variable account prior to retirement, her choice between a single and joint life annuity, and the other demographic characteristics required to calculate her life annuity payments under the different benefit formulas for which she is eligible.

In Table 1, we provide separate summary statistics for retirees whose total life annuity benefits are calculated using *DC* (66.4% of retirees), *DB* (9.8%), and *DCDB* (23.8%). Columns (2) through (8) summarize inputs into the various life annuity benefit formulas, and Columns (9) and (10) report the (initial) monthly life annuity payments under the total life annuity and lump sum options. *Monthly Salary* (4), *PERS retirement Account Balance* (5), *Total Life Annuity* (9), *Partial Life Annuity* (10), and *Incremental Life Annuity* (11) are converted to December 2003 dollars using the Consumer Price Index.

Although PERS automatically determines which life annuity formula applies to each retiree, the fact that Columns (2) through (8) are inputs into these formulas results in significant differences in the panels of Table 1. For example, life annuity payments calculated under *DC* are increasing in the level of the PERS retirement account balance, whereas payments calculated under

Table 1
Oregon PERS retirees' characteristics, 1990-2002

	(1)	(2)	(3)	(4)	(5)	(6)	(7)	(8)	(9)	(10)	(11)
	No. Retirees	Age	Years of Service	Monthly Salary	PERS Account Balance	% Police or Fire	% Female	% Early Retiree	Total Life Annuity	Partial Life Annuity	Incremental Annuity
Panel A: Retirees for Whom Maximal Total Life Annuity Payment Determined by DC											
1990	336	60.6	17.5	\$4,555	\$110,538	3.3	35.7	30.4	\$1,921	\$961	\$960
1991	882	60.9	19.2	\$4,309	\$123,313	2.4	40.0	23.4	\$2,153	\$1,078	\$1,075
1992	544	61.0	19.7	\$4,452	\$119,422	4.2	35.1	27.6	\$2,093	\$1,048	\$1,046
1993	924	60.6	20.8	\$4,519	\$133,868	2.8	36.6	27.6	\$2,317	\$1,161	\$1,157
1994	1,104	60.5	21.4	\$4,574	\$136,170	3.0	41.6	28.5	\$2,354	\$1,180	\$1,175
1995	1,138	60.3	20.9	\$4,265	\$141,662	3.0	49.0	25.3	\$2,434	\$1,219	\$1,215
1996	1,220	60.2	21.9	\$4,315	\$142,426	2.8	47.5	23.2	\$2,443	\$1,225	\$1,217
1997	1,785	59.8	21.7	\$4,359	\$155,781	4.3	52.8	23.9	\$2,667	\$1,337	\$1,330
1998	3,635	59.1	22.2	\$4,469	\$174,448	4.4	53.6	33.6	\$2,941	\$1,473	\$1,467
1999	3,614	58.5	21.7	\$4,528	\$181,613	6.0	54.8	38.0	\$3,020	\$1,513	\$1,507
2000	1,691	58.3	20.8	\$4,484	\$178,727	8.4	55.5	38.6	\$2,954	\$1,482	\$1,472
2001	2,311	58.4	22.2	\$4,603	\$188,586	7.4	55.6	32.2	\$3,126	\$1,567	\$1,558
2002	2,089	58.3	23.2	\$4,726	\$197,325	6.8	57.1	34.3	\$3,268	\$1,641	\$1,627
Panel B: Retirees for Whom Maximal Total Life Annuity Payment Determined by DB											
1990	299	58.8	22.6	\$4,413	\$73,329	17.1	44.1	4.0	\$1,829	\$1,136	\$693
1991	180	59.5	19.1	\$4,203	\$56,450	20.0	45.0	7.2	\$1,531	\$956	\$575
1992	272	59.9	17.7	\$4,397	\$57,921	19.1	46.7	7.0	\$1,468	\$918	\$551
1993	276	61.2	14.8	\$4,080	\$41,867	19.6	43.5	5.8	\$1,149	\$725	\$423
1994	496	60.5	16.0	\$4,242	\$51,231	16.1	48.2	7.3	\$1,303	\$816	\$487
1995	861	61.1	11.4	\$3,507	\$27,484	10.8	42.7	11.3	\$643	\$392	\$251
1996	163	60.8	12.1	\$4,004	\$37,218	13.9	52.2	5.1	\$891	\$553	\$338
1997	248	60.2	12.8	\$4,063	\$40,179	16.9	57.3	11.7	\$915	\$566	\$349
1998	197	60.1	13.4	\$4,129	\$41,022	19.3	60.9	17.8	\$977	\$604	\$373
1999	182	60.0	12.9	\$3,766	\$35,421	22.5	54.4	15.9	\$829	\$514	\$315
2000	106	60.1	11.2	\$4,235	\$36,803	20.8	37.7	14.2	\$842	\$521	\$322
2001	198	60.2	12.6	\$4,303	\$42,585	15.7	48.5	13.6	\$973	\$599	\$374
2002	198	60.5	11.5	\$4,179	\$36,480	15.2	60.6	14.6	\$827	\$508	\$319

(continued)

Table 1
Continued

	(1)	(2)	(3)	(4)	(5)	(6)	(7)	(8)	(9)	(10)	(11)
	No. Retirees	Age	Years of Service	Monthly Salary	PERS Account Balance	% Police or Fire	% Female	% Early Retiree	Total Life Annuity	Partial Life Annuity	Incremental Annuity
Panel C: Retirees for Whom Maximal Total Life Annuity Payment Determined by DCDB											
1990	986	60.5	20.3	\$3,932	\$78,888	6.3	52.8	13.2	\$1,523	\$844	\$679
1991	814	59.4	22.0	\$4,007	\$94,574	14.1	54.1	9.5	\$1,773	\$984	\$789
1992	1,059	59.7	22.4	\$4,262	\$97,160	13.4	49.1	12.5	\$1,855	\$1,034	\$822
1993	973	59.5	22.7	\$4,284	\$102,521	14.0	57.8	10.6	\$1,928	\$1,065	\$863
1994	1,575	58.9	23.5	\$4,469	\$110,164	15.6	56.6	11.1	\$2,066	\$1,150	\$916
1995	313	58.5	21.2	\$4,247	\$102,851	23.3	65.2	9.9	\$1,864	\$1,025	\$839
1996	337	57.9	23.0	\$4,609	\$120,323	24.6	58.7	8.8	\$2,187	\$1,214	\$973
1997	424	56.5	23.6	\$5,205	\$149,493	46.0	46.5	11.1	\$2,707	\$1,515	\$1,192
1998	338	55.8	23.9	\$5,496	\$174,017	59.5	42.3	16.9	\$3,039	\$1,667	\$1,372
1999	269	55.5	24.6	\$6,078	\$206,041	65.8	33.1	11.5	\$3,544	\$1,923	\$1,621
2000	86	54.6	24.9	\$6,413	\$228,500	74.4	29.1	8.1	\$3,905	\$2,128	\$1,777
2001	135	54.9	24.9	\$6,385	\$220,348	63.0	38.5	11.1	\$3,736	\$2,019	\$1,717
2002	124	55.9	24.6	\$6,132	\$204,709	55.6	47.6	16.9	\$3,514	\$1,897	\$1,617

This table reports summary statistics for individuals between the ages of fifty and seventy who retire from the Oregon Public Employees Retirement System (PERS) and begin collecting retirement benefits immediately after leaving employment. Panels A, B, and C focus on retirees whose total life annuity benefits are calculated under DC, DB, and DCDB, respectively. Age reports the average members' age in the month of retirement; Years of Service reports the average number of years that the member contributed into PERS; Monthly Salary is the average of the member's PERS salary over the prior thirty-six months; Account Balance is the average value of the member's PERS retirement account balances at the time of retirement, which determines the lump sum payout; % Female measures the fraction of retirees who are female; % Police or Fire measures the fraction of retirees who previously worked as police or officers; and % Retiring Early measures the fraction of members who retire before reaching the normal retirement age. Total Life Annuity is the average level of the initial monthly payment under the total life annuity option, whereas Partial Life Annuity is the average level of the initial monthly payment under the lump sum option. Monthly Salary, Account Balance, Total Life Annuity, and Partial Life Annuity are converted into December 2003 dollars using the Consumer Price Index.

DB are not. Consequently, the average *Account Balance* ranges from \$110,538 to \$197,325 under *DC* but from \$27,484 to \$73,329 under *DB*.

Table 1 highlights the variation in annuity pricing faced by retirees whose maximal total life annuity payments are calculated under *DC*, *DB*, and *DCDB*. Consider retirees in 1995. In Panel A, the average retiree forgoes approximately 50% of the total life annuity monthly payment of \$2,434 to receive an immediate lump sum payment of \$141,662. On the other hand, in Panel B, the retiree forgoes approximately 40% of the total life annuity monthly payment of \$643 to receive an immediate lump sum payment of \$27,484.

In Table 2, we illustrate how the relative value of PERS life annuity payments varies with the risk-free rate of return. Specifically, we calculate the money's worth of PERS incremental life annuity payments under *DC* for male retirees who turn sixty-five in January 1990, January 1991, . . . , January 2002. We also calculate the money's worth of the life annuity payments that retirees could purchase from TIAA using the lump sum payment. For these retirees, the PERS life annuity is always better than actuarially fair, with money's worth ranging from \$1.14 in January 1990 to \$1.50 in January 2002.

Within our sample of 32,060 retirees, the money's worth of the incremental life annuity is better than actuarially fair for all but 112 retirees. In contrast, the money's worth of the life annuities offered by TIAA is less volatile and never more than \$0.92. In Table 2, for a 65-year-old male, θ ranges from 1.30 to 1.77. Within our full sample of retirees, θ ranges from 1.17 to 1.82, with an average value of 1.60. The main source of time-series variation in θ is the fact that TIAA adjusts its actuarial equivalency factors each January, based on changes in annuitant life expectancy and the risk-free rate, whereas PERS does not.¹⁶ In the bottom row of Table 2, we show that the correlation between the yield on ten-year U.S. Treasury notes and TIAA's actuarial equivalency factors (Column (4)) is 0.935. We also show that the correlation between the Treasury yield and θ (Column (9)) is -0.955 .

4. How Do PERS Retirees Value Incremental Life Annuities?

Table 3 reports the fraction of PERS retirees choosing the lump sum option each year. Notably, only 15% choose the lump sum option; the remaining 85% choose to receive all of their retirement benefits in the form of life annuity payments. The high demand for incremental life annuities in our setting is striking and is consistent with the fact that PERS incremental life annuities have much higher money's worth than life annuities available in the private market.

¹⁶ PERS adjusts its actuarial equivalency factor tables once during our sample period. On January 1, 1997, PERS switches from actuarial equivalency factors that increase annually, in the retiree's birth month, to factors that increase monthly. At the same time, PERS increases actuarial equivalency factors for those retiring below the age of fifty-five. However, the increases are small, ranging from 2.2% at age fifty to 0.1% at age fifty-four.

Table 2
Comparing money's worth of life annuities available from PERS and TIAA, 1990-2002

Year	PERS			TIAA			PERS Relative to TIAA			Yield Ten-Year Treasury (%)
	(1)	(2)	(3)	(4)	(5)	(6)	(7)	(8)	(9)	
1990	9.79	115.94	1.14	8.82	99.39	0.88	1.11	1.17	1.30	8.43
1991	9.79	119.51	1.17	8.75	102.19	0.89	1.12	1.17	1.31	8.03
1992	9.79	126.22	1.24	8.52	107.41	0.92	1.15	1.18	1.35	7.31
1993	9.79	135.81	1.33	7.72	114.84	0.89	1.27	1.18	1.50	6.39
1994	9.79	145.37	1.42	7.10	122.20	0.87	1.38	1.19	1.64	5.64
1995	9.79	123.27	1.21	7.72	105.12	0.81	1.27	1.17	1.49	7.59
1996	9.79	145.37	1.42	7.10	122.20	0.87	1.38	1.19	1.64	5.58
1997	9.79	134.68	1.32	7.34	113.97	0.84	1.33	1.18	1.58	6.50
1998	9.79	146.64	1.44	7.03	123.18	0.87	1.39	1.19	1.66	5.51
1999	9.79	157.50	1.54	6.61	131.47	0.87	1.48	1.20	1.77	4.65
2000	9.79	132.48	1.30	7.39	112.27	0.83	1.33	1.18	1.56	6.67
2001	9.79	150.57	1.47	7.08	126.18	0.89	1.38	1.19	1.65	5.18
2002	9.79	153.28	1.50	6.77	128.25	0.87	1.45	1.20	1.73	5.03
Correl.	0.000	-0.998	-0.998	0.935	-0.998	-0.028	-0.945	-0.999	-0.955	—

We compare the money's worth of life annuities based on PERS' DC benefit to the money's worth of TIAA's life annuities. We assume that the retiree is sixty-five years and zero months old and male. The actuarial equivalency factor, AEF, determines the initial monthly life annuity payment per \$1,000 spent to purchase the life annuity. During our sample period, PERS rarely adjusts its AEFs (see footnote 16) whereas TIAA adjusts its AEFs in January of each calendar year to reflect changes in member life expectancies or the risk-free rate. EPV is the expected present value of receiving an initial monthly life annuity payment of \$1.00 beginning next month. The nominal value of the life annuity payments to be received from PERS is assumed to grow at 2.0% per year, whereas the nominal value of life annuity payments to be received from TIAA is assumed to be constant. To calculate the probability that the retiree receives the life annuity payment t months from today, we use life tables published by the U.S. Social Security Administration for 2004. To calculate the present value of the expected payments, we use the yield the ten-year U.S. Treasury note at the end of the prior month. The average annual yield is reported in Column (10). We calculate money's worth of each life annuity as the expected present value of its life annuity payments relative to its price (i.e., as AEF times EPV divided by \$1,000). In Column (9), we calculate the money's worth of the PERS life annuity relative to the money's worth of the TIAA life annuity (i.e., θ equals AEF_{PERS} times EPV_{PERS} divided by AEF_{TIAA} times EPV_{TIAA}). When θ equals one, PERS and TIAA allow retirees to purchase the same expected present value of life annuity benefits per dollar of initial outlay. Values greater than one, as observed in this table, imply that PERS sells more valuable life annuity benefits than TIAA. The bottom row reports the pairwise correlation between the yield on the ten-year U.S. Treasury note and AEF, EPV, and MW.

Table 3
Percent of PERS retirees choosing lump sum option, by retirement calculation method, 1990–2002

Year	All Retirees			DC			DB			DCDB		
	No. Retirees	% Lump	MW	No. Retirees	% Lump	MW	No. Retirees	% Lump	MW	No. Retirees	% Lump	MW
1990	1,621	8.6	\$1.16	336	7.1	\$1.12	299	9.4	\$1.24	986	8.8	\$1.15
1991	1,876	8.6	\$1.21	882	7.9	\$1.20	180	15.0	\$1.29	814	7.9	\$1.21
1992	1,875	6.9	\$1.30	544	7.2	\$1.28	272	11.0	\$1.38	1,059	5.7	\$1.31
1993	2,173	9.7	\$1.47	924	9.2	\$1.42	276	18.8	\$1.54	973	7.6	\$1.52
1994	3,175	10.4	\$1.26	1,104	11.4	\$1.24	496	14.3	\$1.31	1,575	8.5	\$1.27
1995	1,637	16.4	\$1.40	1,138	16.8	\$1.40	186	22.6	\$1.30	313	11.2	\$1.47
1996	2,073	18.1	\$1.39	1,220	18.2	\$1.37	316	20.6	\$1.32	537	16.4	\$1.40
1997	2,457	17.9	\$1.43	1,785	18.8	\$1.43	248	22.2	\$1.28	424	11.6	\$1.45
1998	4,170	20.5	\$1.59	3,635	21.0	\$1.59	197	23.9	\$1.48	338	12.7	\$1.60
1999	4,065	20.4	\$1.51	3,614	20.5	\$1.51	182	22.0	\$1.35	269	18.2	\$1.51
2000	1,883	21.7	\$1.48	1,691	21.4	\$1.50	106	28.3	\$1.29	86	19.8	\$1.47
2001	2,644	15.9	\$1.63	2,311	15.7	\$1.63	198	18.7	\$1.48	135	15.6	\$1.64
2002	2,411	10.6	\$1.67	2,089	10.4	\$1.67	198	11.6	\$1.58	124	12.1	\$1.68
Total	32,060	15.0	\$1.45	21,273	16.6	\$1.49	3,154	17.3	\$1.36	7,633	9.6	\$1.33

This table summarizes the demand for lump sum options across years and across retirees for whom the total life annuity benefit is calculated using DC, DB, or DCDB. The sample is the same that we summarize in Table 1. % Lump reflects the fraction of retirees choosing the lump sum option. MW is the money's worth of the total life annuity option relative to the lump sum option. It is defined as the expected present value of the life annuity payments under the total life annuity option minus those under the lump sum option, divided by the lump sum payout. We report the median value of MW each year.

The low demand for lump sum payments is also consistent with alternative explanations. It may reflect the fact that individuals with greater demand for annuitized retirement benefits are more likely to become public employees. It may reflect the fact that it is easier for employees to choose the total life annuity payout option over the lump sum option than it is for other retirees to research and purchase incremental life annuities in the private market. Or, because PERS reports the monthly payment associated with each payout option rather than the implied rate of return, it may reflect the framing effect described in [Brown et al. \(2008\)](#). We cannot measure the impact of these explanations on the average demand for lump sum payments. However, because they are time-invariant, they are unlikely to explain time-series variation in the fraction of retirees choosing the lump sum option.

4.1 Time-series regressions

Figure 1 reveals significant time-series variation in the fraction of retirees choosing the lump sum option, and Table 3 shows that this variation exists regardless of how the total life annuity benefit is calculated. In Table 4, we seek to explain this time-series variation in the demand for the lump sum option. The dependent variable in each time-series regression is the fraction of retirees who choose the lump sum option in month t . Because the number of retirements varies significantly across months (from a low of six in January 1990 to a high of 2,999 in February 1998), this fraction is a noisier estimate of retiree preferences in some months than others. To account for this heteroscedasticity,

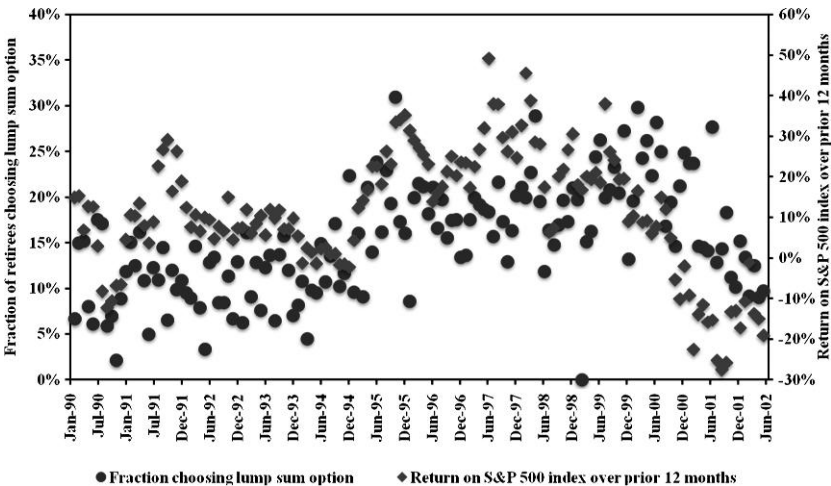


Figure 1
Fraction of PERS employees choosing lump sum option and lagged stock return, 1990–2002
 Monthly time-series plot of the fraction of retirees in each month who choose the lump sum option (scale on the left axis) and the return on the S&P 500 index over the prior twelve months (scale on the right axis). Our sample period is January 1990 to June 2002.

Table 4
Predicting average monthly demand for lump sum option, 1990–2002

Estimation:	Levels	Levels	Levels	Levels	1 st Differences
	(1)	(2)	(3)	(4)	(5)
Relative Generosity of PERS Life Annuity	0.268*** (0.069)	0.265*** (0.038)	0.206*** (0.048)	0.111*** (0.039)	0.322* (0.185)
Return on S&P 500 Index over prior 12 months		0.160*** (0.042)	0.174*** (0.036)	0.144*** (0.028)	0.071* (0.041)
Level of VIX index at end of prior month			0.289** (0.131)	0.100 (0.092)	0.119 (0.124)
Inflation-adjusted level of NASDAQ index at end of prior month				0.005*** (0.001)	0.001 (0.002)
Constant	-0.182 (0.080)	-0.195*** (0.049)	-0.180*** (0.057)	-0.073 (0.048)	-0.009** (0.004)
Number of monthly observations	150	150	150	150	149
F-statistic	15.07***	37.55***	23.39***	31.64***	2.67**

We report coefficients from time-series regressions estimated via weighted least squares. The sample consists of the 150 months between January 1990 and June 2002. The dependent variable is the fraction of PERS retirees who choose the lump sum option in month t . The weight in month t is the number of retiree choices used to calculate this fraction. Independent variables include the ratio of the actuarial equivalency factor available from PERS (under the DC formula) to the life annuity payment available from TIAA (i.e., Column (7) of Table 2), the return on the S&P 500 index over the prior twelve months, the implied volatility on the S&P 500 index option over month t as measured by the CBOE Volatility Index (VIX) at the end of month $t - 1$, and the inflation-adjusted level of NASDAQ measured at the end of month $t - 1$. Variables in Columns (1) through (4) are measured as levels. Variables in Column (5) are measured as first differences, which results in the loss of one observation. Standard errors are reported in parentheses and calculated as in Newey and West (1987), with a lag of twenty-four months. Significance at the 10%, 5%, and 1% levels is denoted by *, **, and ***.

we weight each observation by the number of retirements in that month. Standard errors are estimated using the Newey and West (1987) estimator, allowing autocorrelation to persist for twenty-four months.

Our basic prediction is that demand for the lump sum option will fall when incremental life annuities are more valuable. Yet, in Column (1), we find that demand for the lump sum option rises when PERS life annuities are relatively more generous than those available from TIAA. The coefficient is statistically significant at the 1% level. It is also economically significant. A one-standard-deviation increase in the relative generosity of PERS is associated with a 3.2 percentage point increase in the demand for the lump sum option. In other words, demand for lump sums is increasing precisely when the relative value of the incremental life annuities available from PERS is increasing. One interpretation is that retirees are confused about the impact of interest rates on the value of PERS life annuity payments. For example, they may be following advice—like that in Milevsky and Young (2002)—to delay annuitization when the risk-free rate is low, despite the fact that this advice does not apply in our setting. However, as we discuss in Section 2.3, it is important to control for variation in economic conditions and investor sentiment that may lead retirees to prefer a lump sum, despite the lower interest rates.

We learn three things when we control for the return on the S&P 500 index over the prior twelve months, the level of VIX in the prior month, and the inflation-adjusted level of NASDAQ in the prior month. First, the coefficient

on our measure of PERS generosity falls by approximately 60% between Columns (1) and (4), highlighting the need to control for variation in economic conditions and investor sentiment. Second, the coefficient nevertheless remains positive and statistically significant at the 1% level in Columns (2) through (4) and at the 10% level when we switch from levels to first differences in Column (5). It also remains positive and statistically significant at the 1% level in an unreported regression that ends the sample in December 1998 to exclude the NASDAQ crash. In other words, regardless of how we control for economic conditions and investor sentiment, we find no evidence that retirees understand that lower interest rates increase the value of PERS life annuity payments.¹⁷

The third insight is that economic conditions and investor sentiment help to explain demand for the lump sum option. We find some evidence that demand for the lump sum option is increasing in both the level of VIX and the inflation-adjusted level of NASDAQ in the month immediately before the payout choice. However, the estimated coefficient on VIX is not statistically significant when we control for the level of NASDAQ. Our most robust finding is that demand for the lump sum option rises with recent equity market returns (p -value of .001). In terms of economic significance, a one-standard-deviation increase in the lagged return on the S&P 500 index is associated with a 2.2 to 2.6 percentage point increase in the demand for the lump sum option. The most provocative interpretation of this correlation is that retirees are extrapolating future equity market returns from recent equity market returns and then using the lump sum payment to chase recent equity market returns.¹⁸

4.2 Predicting individual demand for the lump sum option

We now turn our attention to individual-level retirement payout choices. In Table 5, we report marginal effects from five logit models, where the dependent variable equals one if retiree k chooses the lump sum option and zero if she chooses the total life annuity option. We use three sets of independent variables to explain the individual payout choices of 31,809 retirees.¹⁹ The first set measures differences in retiree characteristics, including differences in life expectancy, risk aversion, and the level of life annuity income under the lump sum option. The second set measures variation in the money's worth of

¹⁷ In an unreported specification, we include the fraction of retirees who chose the lump sum payment in the previous month, as a control for the impact of economic conditions and investor sentiment in the prior month, as well as the P/E ratio on the S&P 500 index in the prior quarter. The coefficient on our measure of PERS generosity increases from 0.111, in Column (4), to 0.137 and remains statistically significant from zero at the 1% level.

¹⁸ The return chasing interpretation is consistent with behavior that [Chevalier and Ellison \(1997\)](#) and [Sirri and Tufano \(1998\)](#) observe in the mutual fund industry and that [Benartzi \(2001\)](#) observes when studying how investors allocate 401(k) plan assets to company stock.

¹⁹ In Table 5, we exclude 251 retirees, because we lack data on the location of their most recent employer. Without these data, we are unable to control for the local unemployment rate. Our inferences are unchanged when we include these retirees and drop our control for the local unemployment rate.

the incremental life annuity payments, which distills our cross-sectional and time-series variation into a single measure of annuity pricing. (In Table 6, we distinguish between different sources of variation in money's worth.) The third set controls for economic conditions and investor sentiment. It includes the lagged return on the S&P 500 index, the lagged return earned in the retiree's PERS retirement account, the inflation-adjusted level of NASDAQ measured at the end of the previous month, the level of VIX at the end of the previous month, and the local (county-level) unemployment rate.

Each specification includes a separate fixed effect for each year of service (1, 2, 3, . . .) to control for variation in payout choices that is related to

Table 5
Predicting individual demand for lump sum option, 1990–2002

Sample:	Full	Full	Single Life	Joint Life	Full
	(1)	(2)	(3)	(4)	(5)
Retiree Characteristics					
Dies 1–24 months after retirement	0.085*** (0.024)	0.086*** (0.024)	0.177*** (0.048)	0.042* (0.022)	0.090*** (0.024)
Dies 25–48 months after retirement	0.014 (0.017)	0.016 (0.017)	–0.025 (0.029)	0.036 (0.021)	0.017 (0.017)
Female	–0.046*** (0.007)	–0.047*** (0.007)	–0.082*** (0.011)	–0.027*** (0.007)	–0.049*** (0.008)
Positive allocation to variable investment vehicle	0.021*** (0.005)	0.020*** (0.005)	0.017** (0.008)	0.021*** (0.005)	0.019*** (0.005)
Eligible for police or fire benefits	–0.009 (0.007)	–0.021*** (0.008)	–0.018 (0.017)	–0.022*** (0.007)	–0.020*** (0.008)
Level of partial life annuity (\$000, Dec 2003)	0.035*** (0.003)	0.036*** (0.003)	0.052*** (0.008)	0.031*** (0.004)	0.030*** (0.004)
Chooses single life annuity	0.077*** (0.005)	0.077*** (0.005)			0.081*** (0.004)
Estimated fraction of career spent working for PERS employers	–0.191*** (0.067)	–0.733*** (0.097)	–1.228*** (0.156)	–0.400*** (0.141)	–0.737*** (0.093)
Salary at or above 75th percentile (within calendar year)	–0.031*** (0.005)	–0.032*** (0.005)	–0.033*** (0.010)	–0.032*** (0.006)	–0.027*** (0.005)
Retiring before normal retirement age	0.027*** (0.006)	0.006 (0.011)	0.018 (0.023)	0.001 (0.011)	0.005 (0.010)
Tier 2 retirement benefits	–0.033 (0.027)	–0.031 (0.028)	–0.051 (0.034)	–0.017 (0.048)	–0.027 (0.027)
Old enough to collect Social Security benefits (62+)	–0.038*** (0.007)				
Value of Incremental Life Annuity					
Ln Money's Worth	0.045*** (0.013)	0.044*** (0.014)	0.045** (0.021)	0.045*** (0.016)	0.029*** (0.011)
Retiree Not Eligible for DCDB?	–0.016*** (0.006)	–0.016*** (0.006)	–0.035*** (0.012)	–0.007 (0.007)	–0.032*** (0.007)
Economic Conditions and Investor Sentiment					
Local unemployment rate	–0.167 (0.182)	–0.174 (0.182)	–0.029 (0.279)	–0.271 (0.176)	–0.005 (0.125)
Level of VIX at end of month $t-1$	0.112 (0.095)	0.109 (0.094)	0.168 (0.150)	0.077 (0.083)	0.019 (0.084)
Inflation-adjusted level of NASDAQ index at end of month $t-1$	0.005*** (0.001)	0.005*** (0.001)	0.006*** (0.001)	0.005*** (0.001)	0.002 (0.001)
Return on S&P 500 index over prior 12 months	0.155*** (0.034)	0.155*** (0.034)	0.145*** (0.052)	0.164*** (0.030)	0.064 (0.050)
Return in PERS retirement account over prior 12 months	–0.060 (0.102)	–0.066 (0.102)	–0.025 (0.158)	–0.096 (0.088)	0.017 (0.074)

(continued)

Table 5
Continued

Sample:	Full	Full	Single Life	Joint Life	Full
	(1)	(2)	(3)	(4)	(5)
Years-of-service fixed effects?	Yes	Yes	Yes	Yes	Yes
Age-in-years fixed effects?	–	Yes	Yes	Yes	Yes
Calendar year fixed effects?	–	–	–	–	Yes
Sample size	31,809	31,809	11,500	20,309	31,809
Pseudo R^2	0.0498	0.0534	0.0634	0.0432	0.0592

We report marginal effects estimated via logit. The dependent variable equals one when retiree k chooses the lump sum option and zero when retiree k chooses the total life annuity option. Columns (1), (2), and (5) focus on the full sample of retirees; Column (3) is restricted to retirees who choose a single life annuity; and Column (4) is restricted to retirees who choose a joint life annuity. All specifications include a separate fixed effect for each year of service. Columns (2) through (4) include a separate fixed effect for each year of age between fifty and seventy. Column (5) includes a separate fixed effect for each calendar year. We include dummy variables to indicate whether retiree k dies 1–24 months after retirement; dies 25–48 months after retirement; is female; has a positive allocation to the variable investment vehicle in the PERS retirement account; is eligible for police or fire retirement benefits; chooses a single life annuity; is retiring before the normal retirement age (fifty years of age for police and fire and fifty-eight for almost everyone else); has a preretirement salary in the top quarter of retirees; receives Tier 2 retirement benefits; or is old enough to collect Social Security benefits (62+). We also control for the level of the life annuity payments under the lump sum option (measured in December 2003 dollars) and the estimated fraction of retiree k 's career spent working with PERS employers. Ln Money's Worth is the natural logarithm of the expected present value of the incremental life annuity payments associated with choosing the total life annuity option over the lump sum option, divided by the lump sum payout. Our proxies for economic conditions and investor sentiment include the current unemployment rate in the county of retiree k 's most recent employer, the level of the CBOE Volatility Index (VIX) at the end of month $t-1$, the inflation-adjusted level of the NASDAQ index at the end of month $t-1$, the return on the S&P 500 index over the prior twelve months, and the return earned in the PERS retirement account over this same period. Standard errors are clustered on calendar month (e.g., June 2002). Significance at the 10%, 5%, and 1% levels is denoted by *, **, and ***.

length of service within PERS. Columns (2) through (5) also include a separate fixed effect for each year of age (50, 51, 52, . . .) to control for variation in payout choices that is related to age at retirement.²⁰ Because retirees choosing joint life annuities are more likely to be married, their payout choices should depend on the characteristics of the retirees, which we observe, and on the characteristics of the spouses, which we do not observe. For this reason, in Columns (3) and (4), we separately estimate logit models for retirees who choose single life annuities versus joint life annuities. Column (5) includes a separate fixed effect for each calendar year, to capture average changes in macroeconomic conditions or retiree preferences. Standard errors are clustered on each month in the sample (January 1990, February 1990, . . . , June 2002) to capture the cross-sectional correlation in economic conditions for retirees making choices in the same month. Inference is similar when we instead cluster standard errors at the employer or county level.

4.2.1 Variation in retiree characteristics. When we focus on cross-sectional variation in the value of the incremental life annuity payments caused by differences in retiree characteristics, our findings are broadly consistent

²⁰ Our inferences are unchanged when we estimate linear probability models instead of logits.

with the predictions of life-cycle models. We test for adverse selection in two ways. First, we exploit data on ex post mortality. Among retirees who choose a single life annuity, those who die 1–24 months after retirement are 17.7 percentage points more likely to choose the lump sum option (p -value of .001), whereas those who die 25–48 months after retirement are no more likely to do so. This suggests that single retirees' choices are most sensitive to deaths occurring within twenty-four months of retirement. However, as expected, among retirees who choose a joint life annuity, and are therefore more likely to be maximizing retirement income for both the retiree and spouse, we find weaker evidence at both horizons (p -values of .065 and .091). Second, we find that demand for the lump sum option is lower for female retirees; the difference ranges from 8.2 percentage points (p -value of .000) for those choosing single life annuities to 2.7 percentage points (p -value of .000) for those choosing joint life annuities.

Consistent with longevity insurance being less valuable to retirees who are less risk averse, we find that retirees who allocate a positive fraction of their employee contribution to the riskier investment option are more likely to choose the lump sum option. The estimated marginal effect ranges from 1.7 to 2.1 percentage points.²¹ The fact that police and fire officers are less likely to choose the lump sum option may reflect higher levels of financial risk aversion.

To measure the impact of already-annuitized retirement benefits on the demand for the lump sum option, we include the dollar value of the life annuity payment under the lump sum option (measured in December 2003 dollars). The estimated coefficients are all statistically significant at the 1% level. They are also economically significant, with a one-standard-deviation increase in monthly life annuity payments (\$879) increasing demand for the lump sum between 3.0 and 5.2 percentage points. We obtain similar (unreported) results when we scale the level of already-annuitized monthly income by the retiree's preretirement monthly salary.

An interesting exception to the positive relation between already-annuitized income levels and demand for the lump sum option is that, in Column (1), we find significantly lower demand for the lump sum option by retirees who are old enough to be receiving Social Security benefits (62+). One interpretation is that younger retirees are more likely to use the lump sum to acquire new skills and re-enter the labor force, whereas older retirees are more likely to permanently exit the labor force. This interpretation may help explain why, in Column (1), we find that individuals retiring before the normal retirement age are 2.7 percentage points more likely to choose the lump sum option. And, it may help explain why Warner and Pleeter (2001) find much higher demand for lump sum payments by personnel separating from the military (with an

²¹ Although higher demand for lump sum payments by male retirees is potentially consistent with gender-based differences in risk aversion (Barber and Odean 2001), the estimated marginal effect of the positive allocation to the variable account dummy variable is similar when we restrict the sample to female retirees (2.0 percentage points).

average age of thirty-one) than we find by public retirees (with an average age of fifty-nine).²²

As predicted, we find that retirees who spend a larger fraction of their careers with PERS employers have significantly lower demand for the lump sum option, and that the effect is approximately three times larger for retirees choosing the single life annuity.²³ We also find that retirees whose pre-retirement salary are in the top quartile of retirees are between 2.7 and 3.3 percentage points less likely to choose the lump sum option, which is consistent with the possibility that higher salaries proxy for higher levels of financial literacy.

Whereas the arguments in Kotlikoff and Spivak (1981) and Brown and Poterba (2000) predict that single retirees will be less likely to choose the lump sum option, we find that retirees choosing the *single* life annuity are 7.7 to 8.1 percentage points (p -values of .000) more likely to choose the lump sum option. One possible explanation is that households respond to the fact that PERS incremental life annuities are better than actuarially fair by having the spouse choose not to annuitize her retirement assets, but we do not observe the annuitization choice of the spouse. Another possible explanation is that retirees recognize that the joint life annuities available from PERS are even better deals than single life annuities.

Overall, these findings lead us to conclude that PERS retirees understand how salient differences in life expectancy, risk aversion, and the level of already-annuitized income impact the value of the incremental life annuity.²⁴ Given their consistency with other studies, these findings help allay concerns about the representativeness of our sample.

4.2.2 Variation in life annuity pricing, economic conditions, and investor sentiment. If retirees recognize and respond to variation in PERS life annuity pricing, then demand for the lump sum option should be lower when the value of the incremental life annuity payments is higher. Instead, we find that the natural logarithm of money's worth has a positive and statistically significant impact on the demand for the lump sum option across all five specifications. In terms of economic significance, a one-standard-deviation increase in money's worth increases the probability of choosing the

²² Warner and Pleeter (2001) study the choice between lump sum and non-life-annuity payments in a sample of individuals separating from the military. Although the annuities in their sample are also quite valuable, they find strong demand for the lump sum. This is especially true among enlisted personnel, who may need to invest in new skills to re-enter the labor force.

²³ Controlling for whether the retiree is eligible for "Tier 2" benefits, because she did not contribute into PERS before January 1997, has no additional impact on demand for the lump sum option. Tier 2 members face higher normal retirement ages than other members (sixty vs. fifty-eight) but only account for eighty-five of the 31,809 retirees in our sample.

²⁴ Similarly, Barber, Odean, and Zheng (2005) find that mutual fund investor flows respond most strongly to those fees that are the most salient.

lump sum option by approximately one percentage point in the full sample. Though the economic effect is modest, it is the opposite of what we predict. One interpretation is that retirees are confused by variation in the value of incremental life annuity payments that is unrelated to variation in retiree characteristics.

An alternative interpretation is that falling interest rates increase the expected utility of the lump sum payment by even more than they increase the expected utility of the incremental life annuity payments. We consider two possible mechanisms. The first is that lower interest rates increase the expected present value of the life annuity payments under the lump sum option, and that the resulting income effect decreases the relative value of the incremental life annuity. To test this alternative, we estimate (but do not report) two additional versions of the specification in Column (2). When we replace the dollar value of the life annuity payment under the lump sum option with the natural logarithm of its expected present value, we continue to find a positive and statistically significant impact on demand for the lump sum option. However, the economic significance is reduced by approximately 20%. This suggests that the expected present value is a noisy proxy for the dollar value, which is more salient. When we simultaneously control for the dollar value and the expected present value, the estimated marginal effect on the dollar value is positive and statistically significant, whereas the estimated marginal effect on the expected present value is negative and statistically insignificant. Importantly, the estimated coefficients on the other independent variables—including money's worth—are virtually identical to those reported in Column (2).

The second possible mechanism is that lower interest rates proxy for greater economic uncertainty and that greater economic uncertainty increases the relative value of the lump sum payment. In Table 5, we include the level of VIX to control for macroeconomic uncertainty and the unemployment rate in the county of the retiree's former employer to control for local economic conditions. Whereas our point estimates suggest that demand for the lump sum increases with VIX and decreases with the unemployment rate, the statistical evidence is weak. The more important result is that including these proxies has no impact on the marginal effect associated with money's worth. When we exclude both of these proxies for economic conditions, we find (in an unreported specification) that the marginal effect on money's worth remains 0.045. Furthermore, in Column (5), we continue to find a positive (albeit approximately 35% smaller) relation between money's worth and demand for the lump sum option. Because this specification includes calendar year fixed effects, it controls for the average impact of economic conditions within each year.

Although it remains possible that low interest rates increase the value of the lump sum payment by more than they increase the value of the incremental life annuity payments, it is worth emphasizing that these increases need to be large. Changes in the risk-free rate cause the payments available from PERS

to fluctuate between being 25% and 73% more generous than those available from TIAA.

When we focus on our other proxies for market conditions and investor sentiment in Table 5, we continue to find a strong and statistically significant relation between equity market conditions and demand for the lump sum option. Within the full sample, a one-standard-deviation increase in the level of NASDAQ is associated with a 2.6 percentage point increase in the probability of choosing the lump sum option. Similarly, a one-standard-deviation increase in the return on the S&P 500 index over the prior twelve months is associated with a 2.9 percentage point increase in this probability. In contrast, the return earned in the PERS retirement account over the prior twelve months has no direct effect on the demand for the lump sum option.²⁵ As we discussed above, the most provocative interpretation of these findings is that retirees are using recent equity market returns—which are likely to be salient—to infer future equity market returns. Unfortunately, because we do not observe whether the lump sum payment is invested in equity, we cannot test for return chasing.

The individual-level data do, however, allow us to test the alternative interpretation that higher equity market returns increase household wealth outside of PERS retirement benefits, which then increases demand for cash or consumption. Specifically, we identify subsamples of retirees for whom the PERS retirement account is likely to be a larger fraction of their total wealth and then test whether demand for the lump sum option by these retirees is less sensitive to recent equity market returns. Since retirees choosing single life annuities are more likely to be single, they should have fewer sources of outside wealth than do retirees choosing joint life annuities. Yet, the marginal effects associated with equity market returns are similar for retirees choosing a single life annuity or a joint life annuity (0.145 vs. 0.164). We find similar effects when, in unreported specifications, we focus on the subsample of retirees with twenty or more years of service within PERS (0.154) or the subsample of retirees with twenty or more years of service who choose a single life annuity (0.147).²⁶ The fact that different subsamples of retirees exhibit similar sensitivity to recent equity market returns argues against an interpretation based on changes in outside wealth.

4.2.3 Exploiting cross-sectional and time-series variation in life annuity pricing. In Table 6, we decompose money's worth into the three terms described by Equation (3). The first term is the money's worth of the incremental life annuity that can be purchased from TIAA. Because TIAA

²⁵ Chalmers, Johnson, and Reuter (2008) describe features of PERS that significantly reduce the correlation between the returns on the S&P 500 index and those posted to PERS retirement account balances.

²⁶ Lusardi and Mitchell (2007) and Lusardi and Tufano (2008) find that financial literacy is lower among women. When we estimate separate specifications for males and females, we find that the estimated sensitivity to lagged equity returns is higher for males (0.174) than for females (0.133), but the difference is not statistically significant.

Table 6
Alternative specifications predicting individual demand for lump sum option

Sample:	Full	Full	Age 58	Peer Choices	Full
	(1)	(2)	(3)	(4)	(5)
Retiree Characteristics					
Dies 1–24 months after retirement	0.090*** (0.024)	0.090*** (0.024)	0.140** (0.071)	0.079*** (0.025)	0.089*** (0.024)
Dies 25–48 months after retirement	0.017 (0.017)	0.017 (0.017)	0.037 (0.049)	0.005 (0.017)	0.019 (0.017)
Female	-0.053*** (0.010)	-0.053*** (0.010)	-0.051*** (0.016)	-0.052*** (0.010)	-0.055*** (0.010)
Positive allocation to variable investment vehicle	0.021*** (0.005)	0.021*** (0.005)	0.007 (0.013)	0.023*** (0.005)	0.022*** (0.005)
Eligible for police or fire benefits	-0.021*** (0.008)	-0.024*** (0.008)	-0.033 (0.047)	-0.022*** (0.008)	-0.016** (0.008)
Level of partial life annuity (\$000, Dec 2003)	0.031*** (0.004)	0.032*** (0.004)	0.025*** (0.009)	0.033*** (0.004)	0.019*** (0.005)
Chooses single life annuity	0.080*** (0.005)	0.080*** (0.005)	0.053*** (0.013)	0.078*** (0.005)	0.080*** (0.005)
Estimated fraction of career spent working for PERS employers	-0.753*** (0.095)	-0.744*** (0.094)	0.563 (0.511)	-0.733*** (0.107)	-0.766*** (0.094)
Salary at or above 75th percentile (within calendar year)	-0.028*** (0.005)	-0.028*** (0.005)	0.001 (0.015)	-0.028*** (0.005)	-0.026*** (0.005)
Retiring before normal retirement age	0.004 (0.010)	0.005 (0.010)	0.208 (0.419)	0.004 (0.011)	0.004 (0.011)
Tier 2 retirement benefits	-0.037 (0.025)	-0.035 (0.026)		-0.013 (0.036)	-0.039 (0.025)
Fraction of coworkers who chose lump sum in prior 12 month				0.094*** (0.014)	
Value of Incremental Life Annuity					
Ln MW of life annuity from TIAA	0.033 (0.061)	0.032 (0.061)	-0.018 (0.115)	0.033 (0.062)	0.029 (0.061)
Ln (MW DC / MW TIAA) = Ln θ	0.233*** (0.070)	0.232*** (0.070)	0.188* (0.107)	0.229*** (0.084)	0.232*** (0.070)
Ln (MW Max / MW DC) = Ln δ	0.029** (0.012)		-0.014 (0.055)	0.030** (0.015)	0.027** (0.011)
Ln (MW Hyp. Max / MW DC) = Ln δ_1		0.038*** (0.012)			
Ln (MW Max / MW Hyp. Max) = Ln δ_2		-0.097** (0.044)			
Retiree Not Eligible for DCDB	-0.027*** (0.007)	-0.032*** (0.007)	-0.010 (0.015)	-0.021*** (0.007)	-0.028*** (0.007)
Lump Sum in Top 10%					0.046*** (0.012)
Incremental Life Annuity Payments in Bottom 10%					0.046*** (0.011)
Economic Conditions and Investor Sentiment					
Local unemployment rate	-0.222 (0.178)	-0.222 (0.179)	-0.311 (0.280)	-0.244 (0.183)	-0.235 (0.181)
Level of VIX at end of month $t-1$	0.021 (0.100)	0.021 (0.100)	0.115 (0.159)	-0.029 (0.103)	0.024 (0.099)
Inflation-adjusted level of NASDAQ index at end of month $t-1$	0.004*** (0.001)	0.004*** (0.001)	0.003* (0.002)	0.004*** (0.001)	0.004*** (0.001)
Return on S&P 500 index over prior 12 months	0.146*** (0.032)	0.145*** (0.032)	0.143** (0.058)	0.151*** (0.032)	0.149*** (0.031)
Return in PERS retirement account over prior 12 months	-0.068 (0.091)	-0.065 (0.091)	0.058 (0.166)	-0.073 (0.098)	-0.068 (0.090)

(continued)

Table 6
Continued

Sample:	Full	Full	Age 58	Peer Choices	Full
	(1)	(2)	(3)	(4)	(5)
Years-of-service fixed effects?	Yes	Yes	Yes	Yes	Yes
Age-in-years fixed effects?	Yes	Yes	Yes	Yes	Yes
Sample size	31,809	31,809	4,254	28,762	31,809
Pseudo R^2	0.0556	0.0559	0.0574	0.0540	0.0577

We report marginal effects estimated via logit. The dependent variable equals one when retiree k chooses the lump sum option and zero when the retiree chooses the total life annuity option. Columns (1), (2), and (5) focus on the full sample of PERS retirees; Column (3) is restricted to retirees who are 58 years old and not eligible for police or fire benefits; and Column (4) is restricted to retirees for whom we can calculate the fraction of coworkers who chose the lump sum option in the past twelve months. Our measures of the value of the incremental life annuity payments are based on the following decomposition:

$$MW_{Max}^k = [MW_{TIAA}^k] \times \left[\frac{MW_{Max}^k}{MW_{DC}^k} \right] \times \left[\frac{MW_{DC}^k}{MW_{TIAA}^k} \right] = [MW_{TIAA}^k] \times [\delta^k] \times [\theta^k],$$

where MW_{TIAA} is the money's worth of the incremental life annuity available from TIAA, MW_{DC} is the money's worth of the incremental life annuity available from PERS assuming that the total and partial life annuity payments are both calculated under DC, and MW_{Max} is the money's worth of the incremental life annuity available from PERS based on the maximum total and partial life annuity payments that retiree k is eligible to receive. In Column (2), we decompose δ further,

$$\delta^k = \left[\frac{MW_{Max}^k}{MW_{DC}^k} \right] \times \left[\frac{MW_{Hyp.Max}^k}{MW_{DC}^k} \times \frac{MW_{Max}^k}{MW_{Hyp.Max}^k} \right] = [\delta_1^k \times \delta_2^k],$$

where $MW_{Hyp.Max}$ is the money's worth of the incremental life annuity payments available from PERS, assuming that retiree k is eligible for total life annuity payments calculated under DCDB. In addition, we include dummy variables indicating whether retiree k is ineligible for total life annuity payments calculated under DCDB, has access to a lump sum payment in the top 10% of all lump sum payments during our sample period, or has access to incremental life annuity payments in the bottom 10% of all incremental life annuity payments during our sample period. We also include the fraction of retiree k 's coworkers who chose the lump sum option in the prior twelve months (set to missing when there have been no retirements from the employer in the prior twelve months). All other variables are defined in the notes to Table 5. Standard errors cluster on the date of the payout choice (e.g., June 2002). Significance at the 10%, 5%, and 1% levels is denoted by *, **, and ***.

adjusts its actuarial equivalency factors each January, in response to changes in the risk-free rate, the money's worth of the life annuity available from TIAA exhibits little variation. Not surprisingly, the estimated coefficient on this term is small and statistically indistinguishable from zero.

The second term, δ , captures plausibly exogenous cross-sectional variation in the dollar value of the incremental life annuity payments arising from the use of multiple benefit formulas. Because retirees always receive the maximum incremental life annuity payments for which they are eligible, variation in money's worth based on how PERS calculates life annuity payments should be uncorrelated with retiree preferences for incremental life annuities versus lump sums. Whereas the predicted coefficient on δ is negative, the estimated coefficient is positive and statistically significant. However, the economic magnitude is small. A one-standard-deviation increase in δ only increases the probability of choosing the lump sum option by 0.41 percentage points.

Part of the variation in δ arises from the fact that retirees who first contribute to PERS after August 1981 are not eligible for the *DCDB* total life annuity benefit. Among the 21.1% of retirees who are not eligible for *DCDB*, approximately half (10.1% of the full sample) face lower incremental life annuity payments at retirement because of this ineligibility. In Column (2), we distinguish variation in the value of incremental life annuity payments due to other sources (δ_1) from variation due to ineligibility for *DCDB* (δ_2). When we focus on δ_2 , we finally find evidence that lower money's worth is associated with higher demand for the lump sum option. But here, too, the economic magnitude is small. A one-standard-deviation decrease in money's worth due to ineligibility for *DCDB* is associated with a 0.41-percentage-point increase in demand for the lump sum. The implied price elasticity of demand is also small. In the sample of retirees who would have received benefits under *DCDB* if they had been eligible, prices of the incremental life annuity payments are 11.1% higher on average, and demand for the total life annuity option is predicted to be 1.1 percentage points lower. Because 82.9% of the retirees in this sample choose the total life annuity option, this 1.1 percentage point reduction corresponds to a 1.3% reduction in demand for incremental life annuity payments. Therefore, the estimated price elasticity of demand for incremental life annuity payments is inelastic and equal to -0.12 (-1.3% divided by 11.1%). The dummy variable indicating whether retiree k is ineligible for *DCDB* controls for the possibility that individuals accepting jobs as public employees after a reduction in expected retirement benefits attach less value to life annuities. However, none of the estimated marginal effects are positive and statistically significant.

The third term, θ , measures the money's worth of the incremental life annuity payments under *DC* relative to the money's worth of life annuity payments available from *TIAA*—the same source of plausibly exogenous time-series variation that we study in Table 4. The estimated coefficient is positive and statistically significant. In terms of economic significance, a one-standard-deviation increase in the relative value of the incremental life annuities available from PERS is associated with a 2.5 percentage point increase in demand for the lump sum.

To summarize, the evidence that retirees respond to cross-sectional variation in money's worth driven by formulaic eccentricities of the PERS benefit calculations is weak. And, despite our numerous controls for retiree characteristics, economic conditions, and investor sentiment, we find no evidence that demand for the lump sum option responds in the predicted direction to time-series variation in interest rates.

4.2.4 Robustness. We perform robustness tests in the remaining columns of Table 6. In Column (3), our goal is to identify retirees whose choice of retirement date is more driven by retirement eligibility than by the level of

their retirement benefits, so we restrict the sample to retirees who are fifty-eight years old and for whom the normal retirement age is fifty-eight. Our main results hold within this much smaller sample albeit, in some cases, with lower levels of statistical significance. They also hold when, in Column (4), we include the fraction of the retiree's coworkers who chose the lump sum option over the prior twelve months. We view this specification as controlling for employer-level heterogeneity in the preference for incremental life annuities versus lump sums.²⁷

To explore the possibility that retirees rely on less sophisticated—but more salient—measures than money's worth, we include two additional dummy variables in Column (5). The first indicates whether the lump sum payment (measured in December 2003 dollars) is in the top 10% of those offered to PERS retirees; the second indicates whether the incremental life annuity payments (measured in December 2003 dollars) are in the bottom 10% of those offered to PERS retirees. The estimated coefficients on both variables are statistically and economically significant. Retirees facing "large" lump sum payments are 4.6 percentage points more likely to choose the lump sum option, and those facing "small" incremental life annuity payments are 4.6 percentage points more likely to choose the lump sum option.²⁸ Although these findings support the idea that retirees rely on *ad hoc* rules when choosing between the total life annuity and lump sum options, their inclusion has little impact on the estimated coefficients on the other independent variables. In particular, we continue to find that demand for the lump sum option increases (rather than decreases) with the money's worth of the incremental life annuities and with recent equity market returns.

5. Conclusion

To determine how retirees value life annuities, we compare the actual payout choices of a large sample of Oregon public employees to the predictions of a life-cycle model. Because life annuities provide stable income until death and because the incremental life annuities available from PERS are better than actuarially fair, we predict that average demand for the lump sum option will be low. Consistent with this prediction, we find that 85% of PERS retirees choose the total life annuity option. This is a much greater demand for incremental life annuities than has been documented in other settings.

Whether and how retirees respond to variation in the value of life annuity payments, however, depends crucially on the source of variation. When we

²⁷ Chalmers, Johnson, and Reuter (2008) provide evidence of peer effects in the retirement timing decision. Here, we have the more modest goal of using coworker behavior to capture otherwise unobservable heterogeneity in retiree preferences.

²⁸ Based on a survey of 2,600 employees and 2,400 retirees in 2007, Watson Wyatt concludes that "Most employees want a lump sum—if it's big enough." The survey is summarized in "Who Prefers Annuities? Observations About Retirement Decisions," published in the April 2008 issue of *Watson Wyatt Insider*.

focus on salient and easily understood variation due to differences in retiree characteristics, our findings are consistent with both theory and the existing literature. When we focus on sources of plausibly exogenous variation in life annuity pricing that are unique to our setting but arguably less salient, our findings are difficult to reconcile with theory. The evidence that retirees respond to cross-sectional variation in life annuity pricing is limited to a single source of variation in the level of the incremental life annuity payments, and the implied price elasticity of demand is small. Moreover, when we exploit exogenous variation in life annuity pricing arising from time-series variation in the risk-free rate, we find no evidence that demand for the lump sum option falls when interest rates are lower. Instead, we find that demand for the lump sum option is higher when equity returns have been higher. We believe that these last two findings are best explained by financial illiteracy.

However, an alternative interpretation is that retirees are solving more complicated optimization problems than we appreciate. For example, time-series variation in demand for the lump sum option may be driven by time-series variation in the level of financial constraints. Although it seems unlikely to us that the level of financial constraints increases with recent equity market returns and decreases with the interest rate, we cannot directly test this alternative. Also, we cannot directly test the alternative in which retirees understand that when interest rates fall, the level of PERS underfunding rises and exposes retirees who choose the total lump sum option to greater political risk. However, the level of financial constraints or perceived political risk would need to increase significantly to justify forgoing life annuity payments with an expected present value of \$1.45 (or more) for \$1.00 in cash. Finally, what we classify as retiree mistakes may reflect self-interested advice from financial advisors seeking assets under management. It is plausible that it is easier to convince retirees to choose the lump sum option and roll it over to an IRA when recent equity returns are higher and current interest rates are low.

Regardless of how we interpret the impact of interest rates and equity market returns on demand for lump sums, our article offers two lessons to policymakers interested in increasing annuitization rates. To the extent that we find any evidence that retirees respond rationally to changes in annuity pricing, the effect is small. This suggests that small changes in annuity pricing, e.g., due to the introduction of tax subsidies or longevity bonds (Brown and Orszag 2006), are unlikely to increase annuitization rates by an economically significant amount. On the other hand, the fact that we find high demand for the total life annuity option suggests that retirees may respond strongly to large, salient changes in annuity prices. But, given the evidence in Madrian and Shea (2001) and Bütler and Teppa (2007), we believe that policymakers should explore the efficacy of more cost-effective solutions to low annuitization rates, such as making life annuities the default retirement payout choice in retirement plans.

Appendix. Determinants of PERS Incremental Life Annuity Payments

In this Appendix, we describe the formulas used to calculate life annuity payments under the total life annuity and lump sum options. There are four inputs. The first input, x_{DB} , captures the defined benefit aspect of PERS retirement benefits, whereas the second input, x_{DC} , captures the defined contribution aspect of PERS retirement benefits. Formally,

$$x_{DB} = \text{Final Average Salary} \times \text{Years of Service} \times \text{Adjustment for Early Retirement}$$

$$x_{DC} = \text{Account Balance} \times AEF_{PERS}$$

where x_{DB} equals the retiree's final average salary times years of service times a factor that reduces benefits when retiring before the normal retirement age, and x_{DC} equals the retiree's PERS account balance times the actuarial equivalency factor that PERS uses to convert this account balance into a (baseline) life annuity payment. AEF_{PERS} depends on age but not gender. The third input is a dummy variable, I_{PF} , indicating whether the retiree is eligible for police and fire benefits, which are more generous than those available to normal members. The fourth input is a dummy variable, I_{DCDB} , indicating whether the retiree contributed to PERS by August 1981; if so, the retiree is eligible for total life annuity payments calculated under $DCDB$.

The level of the total life annuity payment is the maximum of three possible benefits,

$$TLA = \max \left\{ \begin{array}{ll} (x_{DB} \times (0.0100 + 0.0035 \times I_{PF}) + x_{DC}) \times I_{DCDB} (DCDB) & \\ x_{DB} \times (0.0167 + 0.0035 \times I_{PF}) & (DB) \\ x_{DC} \times 2 & (DC) \end{array} \right\}.$$

When the retiree is eligible for the $DCDB$ benefit, it equals 50.0% of the DC benefit plus 59.9% of the DB benefit for normal retirees (67.5% of the DB benefit for police and fire). Regardless of which formula gives the maximum total life annuity payment, the level of the life annuity payment under the lump sum option is calculated as the maximum of two possible benefits,

$$PLA = \max \left\{ \begin{array}{l} x_{DB} \times (0.0100 + 0.0035 \times I_{PF}) \\ x_{DC} \end{array} \right\}.$$

Neither benefit depends on eligibility for the $DCDB$ total life annuity benefit.

In Table A1, we calculate two ratios that summarize trade-offs between the total life annuity and lump sum options. One panel focuses on normal retirees; the other panel focuses on police and fire officers.

The first ratio is the incremental life annuity payment divided by the total life annuity payment. It ranges from 32.5% for police and fire officers retiring under DB , to 40.1% for normal retirees retiring under DB , and to 50.0% for anyone retiring under DC . In rows (b) and (c), when $DCDB$ offers the highest total life annuity payment, $DCDB$ -eligible retirees face larger incremental life annuity payments than do $DCDB$ -ineligible retirees.

The second ratio, δ , is the money's worth of the actual incremental life annuity payments divided by the money's worth of the incremental life annuity payments under DC . Because there are values of DC and DB for which $DCDB$ -ineligible retirees receive lower total life annuity payments—but the same life annuity payments under the lump sum option—there are values of x_{DC} and x_{DB} for which $DCDB$ -ineligible retirees will find the lump sum option relatively more attractive. For $DCDB$ -eligible retirees, δ equals one when the total life annuity payment is calculated under DC and $DCDB$ and is greater than one under DB . However, for $DCDB$ -ineligible retirees, δ can be as low as 0.65. Note that when δ equals one, variation in δ is entirely driven by retiree age. This reflects the fact that PERS does not adjust its actuarial equivalency factors during our sample period and that we estimate the expected present discount value of the incremental life annuity payments available to each retiree using mortality tables from 2004.

Table A1
Trade-offs between total life annuity option and lump sum option

Panel A: Normal Retirees ($I_{PF} = 0$)

	Maximal TLA Benefit		$(TLA - PLA) / TLA$		δ	
	$I_{DCDB} = 1$	$I_{DCDB} = 0$	$I_{DCDB} = 1$	$I_{DCDB} = 0$	$I_{DCDB} = 1$	$I_{DCDB} = 0$
(a)	DB	DB	0.401	0.401	>1	>1
(b)	DCDB	DB	(0.401, 0.443)	0.401	1	[0.802, 1.000]
(c)	DCDB	DC	(0.443, 0.500)	(0.401, 0.500)	1	[0.802, 1.000]
(d)	DC	DC	0.500	0.500	1	1

Panel B: Police and Fire Retirees ($I_{PF} = 1$)

	Maximal TLA Benefit		$(TLA - PLA) / TLA$		δ	
	$I_{DCDB} = 1$	$I_{DCDB} = 0$	$I_{DCDB} = 1$	$I_{DCDB} = 0$	$I_{DCDB} = 1$	$I_{DCDB} = 0$
(a)	DB	DB	0.325	0.325	>1	>1
(b)	DCDB	DB	(0.325, 0.426)	0.325	1	[0.650, 1.000]
(c)	DCDB	DC	(0.426, 0.500)	(0.325, 0.500)	1	[0.650, 1.000]
(d)	DC	DC	0.500	0.500	1	1

This table summarizes trade-offs between the total life annuity and lump sum options for retirees for whom the maximal total life annuity payment is calculated using different benefit formulas. I_{PF} is a dummy variable that indicates whether the retiree is eligible for police and fire benefits. I_{DCDB} is a dummy variable that indicates whether the retiree contributed to PERS by August 1981, making her eligible for DCDB total life annuity benefits. Panel A focuses on normal retirees ($I_{PF} = 0$), and Panel B focuses on police and fire ($I_{PF} = 1$). The four rows correspond to the different ways that full life annuities can be calculated for DCDB-eligible and DCDB-ineligible retirees, where DC is the defined contribution retirement benefit, DB is the defined benefit retirement benefit, and DCDB is half of the DC benefit plus more than half of the DB benefit. x_{DB} is defined as final average salary times years of service times a factor that reduces benefits when retiring before the normal retirement age. x_{DC} is defined as the PERS account balance times AEF_{PERS}. For normal retirees, the four rows correspond to (a) $x_{DC} < 0.00670 x_{DB}$; (b) $0.00670 x_{DB} \leq x_{DC} < 0.00835 x_{DB}$; (c) $0.00835 x_{DB} \leq x_{DC} < 0.01 x_{DB}$; and (d) $x_{DC} \geq 0.01 x_{DB}$. For police and fire, the four rows correspond to $x_{DC} < 0.00650 x_{DB}$; $0.00650 x_{DB} \leq x_{DC} < 0.01 x_{DB}$; $0.01 x_{DB} \leq x_{DC} < 0.01350 x_{DB}$; and $x_{DC} \geq 0.01350 x_{DB}$. TLA is the level of the life annuity payment associated with the total life annuity option, and PLA is the level of the life annuity payment associated with the lump sum option. The term δ (which appears in Equation (3)) measures the money's worth of the forgone life annuity payments associated with choosing the lump sum option relative to case (d), when the total life annuity and lump sum life annuity are both calculated using DC.

References

Barber, B., and T. Odean. 2001. Boys Will Be Boys: Gender, Overconfidence, and Common Stock Investment. *Quarterly Journal of Economics* 116:261–92.

Barber, B., T. Odean, and L. Zheng. 2005. Out of Sight, Out of Mind: The Effects of Expenses on Mutual Fund Flows. *Journal of Business* 78:2095–120.

Ben-Rephael, A., S. Kandel, and A. Wohl. 2012. Measuring Investor Sentiment with Mutual Fund Flows. *Journal of Financial Economics* 104:363–82.

Benartzi, S. 2001. Excessive Extrapolation and the Allocation of 401(k) Accounts to Company Stock. *Journal of Finance* 56:1747–64.

Benartzi, S., A. Previtro, and R. Thaler. 2011. Annuity Puzzles. *Journal of Economic Perspectives* 25:143–64.

Berk, J., and R. Green. 2004. Mutual Fund Flows and Performance in Rational Markets. *Journal of Political Economy* 112:1269–95.

Brown, J., and J. Poterba. 2000. Joint Life Annuities and Annuity Demand by Married Couples. *Journal of Risk and Insurance* 67:527–54.

Brown, J. 2001. Private Pensions, Mortality Risk, and the Decision to Annuitize. *Journal of Public Economics* 82:29–62.

- Brown, J., and P. Orszag. 2006. The Political Economy of Government-issued Longevity Bonds. *Journal of Risk and Insurance* 73:611–31.
- Brown, J., J. Kling, S. Mullainathan, and M. Wrobel. 2008. Why Don't People Insure Late-life Consumption? A Framing Explanation of the Under-annuitization Puzzle. *American Economic Review Papers & Proceedings* 98:304–9.
- Brown, J. 2009. Understanding the Role of Annuities in Retirement Planning. In *Overcoming the Saving Slump*, ed. Annamaria Lusardi, pp. 178–206. Chicago: University of Chicago Press.
- Bütler, M., and F. Teppa. 2007. The Choice Between an Annuity and a Lump Sum: Results from Swiss Pension Funds. *Journal of Public Economics* 91:1944–66.
- Campbell, J. 2006. Household Finance. *Journal of Finance* 61:1553–604.
- Chalmers, J., W. Johnson, and J. Reuter. 2008. Who Decides When You Retire? Peer Effects and Retirement. Working Paper, University of Oregon.
- Chevalier, J., and G. Ellison. 1997. Risk Taking by Mutual Funds as a Response to Incentives. *Journal of Political Economy* 105:1167–200.
- Davidoff, T., J. Brown, and P. Diamond. 2005. Annuities and Individual Welfare. *American Economic Review* 95:1573–90.
- Finkelstein, A., and J. Poterba. 2004. Adverse Selection in Insurance Markets: Policyholder Evidence from the U.K. Annuity Market. *Journal of Political Economy* 112:183–208.
- Finkelstein, A., J. Poterba, and C. Rothschild. 2009. Redistribution by Insurance Market Regulation: Analyzing a Ban on Gender-based Retirement Annuities. *Journal of Financial Economics* 91:35–58.
- Inkmann, J., P. Lopes, and A. Michaelides. 2011. How Deep Is the Annuity Market Participation Puzzle? *Review of Financial Studies* 24:279–319.
- Kotlikoff, L., and A. Spivak. 1981. The Family as an Incomplete Annuities Market. *Journal of Political Economy* 89:372–91.
- Lusardi, A., and O. Mitchell. 2007. Financial Literacy and Retirement Preparedness: Evidence and Implications for Financial Education Programs. *Business Economics* 42:35–44.
- Lusardi, Annamaria, and Peter Tufano. 2008. Debt Literacy, Financial Experiences, and Overindebtedness. Working Paper No. 14808, NBER.
- Madrian, B., and D. Shea. 2001. The Power of Suggestion: Inertia in 401(k) Participation and Savings Behavior. *Quarterly Journal of Economics* 116:1149–87.
- Milevsky, M. A., and V. R. Young. 2002. Optimal Asset Allocation and the Real Option to Delay Annuitization: It's Not Now-or-Never. Working Paper, York University.
- Mitchell, O., J. Poterba, M. Warshawsky, and J. Brown. 1999. New Evidence on the Money's Worth of Individual Annuities. *American Economic Review* 89:1299–318.
- Newey, W., and K. West. 1987. A Simple, Positive, Semi-definite Heteroskedasticity and Autocorrelation Consistent Covariance Matrix. *Econometrica* 55:703–8.
- Previtero, A. 2010. Stock Market Returns and Annuitization. Working Paper, University of Western Ontario.
- Sirri, E., and P. Tufano. 1998. Costly Search and Mutual Fund Flows. *Journal of Finance* 53:1589–622.
- Sundaresan, S. 2001. *Fixed Income Markets and Their Derivatives*, 2nd ed. Cincinnati, OH: South-Western College Publications.
- Yaari, M. 1965. Uncertain Lifetime, Life Insurance, and the Theory of the Consumer. *Review of Economic Studies* 32:137–50.
- Yogo, M. 2009. Portfolio Choice in Retirement: Health Risk and the Demand for Annuities, Housing, and Risky Assets. Working Paper No. 15307, NBER.