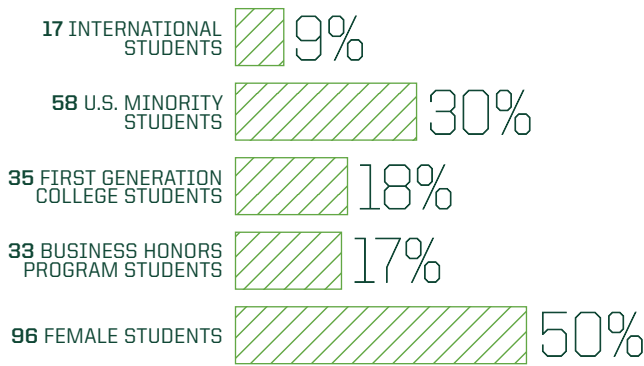




JOB SHADOW PROGRAM

Annual Report 2016-17

STUDENT COMPOSITION



BY CLASS YEAR

CLASS YEAR	2014-15	2015-16	2016-17
Freshman	14%	13%	13%
Sophomore	56%	49%	45%
Junior	29%	34%	40%
Senior	1%	4%	2%

BY MAJOR

MAJOR	2014-15	2015-16	2016-17
Accounting	9%	9%	9%
Business	13%	26%	27%
Prebusiness	78%	65%	64%

191 students

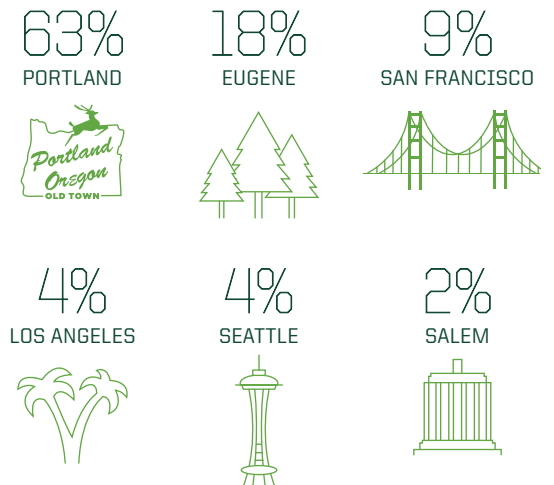
3.47 average participant GPA

97% of students would recommend the program to a friend.

TOP INDUSTRIES REPRESENTED



JOB SHADOW LOCATIONS



"Having some sense of how a manufacturing business ran helped me to visualize and understand concepts throughout my time in the Lundquist College."

TED ACTON '17

"The quality of the students was impressive. I genuinely enjoyed my day with them. They were clearly engaged and interested."

MEGAN MCKINNON, BA '97, OEMBA '05
King Estate Winery

"The job shadow and the process was a great experience and one that I hope I can be a part of as a full-time employee."

ALONSO ZORRILLA '17

2016-17 HOST COMPANIES

- | | | | |
|--|---------------------------------|----------------------------------|-------------------------|
| Aldrich* | Factset Research Systems, Inc.* | Morgan Stanley Wealth Management | PwC* |
| Allied Power Products, Inc.* | Foresters Financial* | Moss Adams LLP* | Salesforce |
| Alpha Media* | Geffen Mesher & Company, P.C. | Mountain Rose Herbs* | Sephora |
| Amazon* | Gerding Edlen* | NIKE, Inc.* | Simple Finance |
| Apttus* | Glory Bee Foods | Ninkasi Brewing* | State of Oregon |
| Aruba, a Hewlett Packard Enterprise Company* | Google* | Northwestern Mutual | TargetPath |
| Axiom EPM | Green Zebra Grocery | On Your Feet* | TEKsystems* |
| Barre 3 | HFF* | Oracle | The North Face |
| bell+funk* | IBM | Oregon Entrepreneurs Network* | U.S. Bank* |
| Beneficial State Bank* | IDL Worldwide* | Oregon Metal Slitters* | Umpqua Bank* |
| Bonneville Environmental Foundation | IDX Broker* | Oregon Sports Authority* | University of Oregon* |
| Columbia Distributing | Intel* | Pac-12 Networks* | UPS* |
| Columbia Sportswear* | Isler CPA* | Pacific Continental Bank | Verizon |
| Couchbase | Johnson Crushers International | Pacific Crest Securities* | Vista Capital Partners* |
| Craft Brew Alliance | King Estate | Patagonia* | Waddell & Reed, Inc.* |
| Delap LLP* | Kirk Martin State Farm Agency* | Perkins & Co.* | Wasserman Media Group |
| Deloitte LLP* | KKR | Peter Jacobsen SPORTS* | WessDel* |
| DRIVE* | KPMG LLP* | Portland General Electric* | WNBA Seattle Storm* |
| Ernst & Young LLP* | Lane United Football Club | Portland Trail Blazers* | Yahoo!* |
| | Levi Strauss & CO. | Portland Winterhawks | |
| | Microsoft Corporation* | | |

83 companies registered to host students.

72% of 2016-17 host companies hosted in a prior year.

59% of students were hosted by UO alumni.

GRADUATE AND ALUMNI IMPACT

After four years, more than 250 job shadow participants have graduated from the Lundquist College of Business. This spring we surveyed the 89 graduating seniors who participated in the Job Shadow Program during their time at the UO. Of those responding to the survey

- 11% interviewed for an internship at their host company
- 37% stayed in touch with a contact from their job shadow day

- 77% felt that the job shadow day had an impact on their career plans.

This year also marked the first time an alumna who participated in the job shadow program as a student took a turn hosting students at her workplace. We're thrilled to see this circle being completed and look forward to many more job shadow alumni hosting future students.

CHRIS BENNETT
541-346-8205
cwb@uoregon.edu

LUNDQUIST COLLEGE OF BUSINESS
1208 University of Oregon
Eugene, OR 97403-1208

BUSINESS.UOREGON.EDU/JOBSHADOW